



Shared medical office space

2222 Santa Monica Blvd, Suite 105, Santa Monica, CA 90404



Brendan Armm, DAOM, LAc, Dipl OM

Lotus Integrative Medicine

2222 Santa Monica Blvd, Suite 105, Santa Monica, CA 90404

armm@lotussm.com

(310) 828-8258



Shared medical office space

\$47.00 /SF/YR

We are an integrative medical center in Santa Monica, established in 2007, looking for additional practitioners to sublet office space in a supportive, professional work environment.

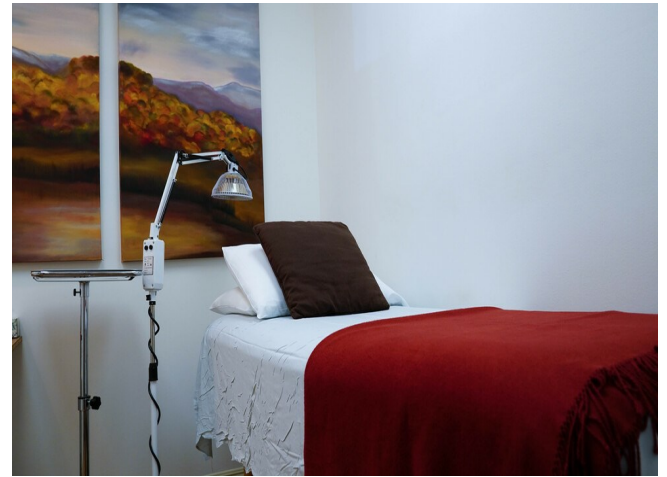
Integrative Medicine Shared Office Space Rental
Available in Santa Monica (1770 square feet)

Office space now available for your private practice within a well-established, integrative medicine center in the...

- Supportive, professional work environment
- Shared office expenses
- Natural light
- Peaceful water fountain in reception area
- In the hub of Santa Monica's medical district
- Excellent street parking, plus excellent medical parking lot

For more information visit:

<https://www.loopnet.com/Listing/2222-Santa-Monica-Bldg-Santa-Monica-CA/27216754/>



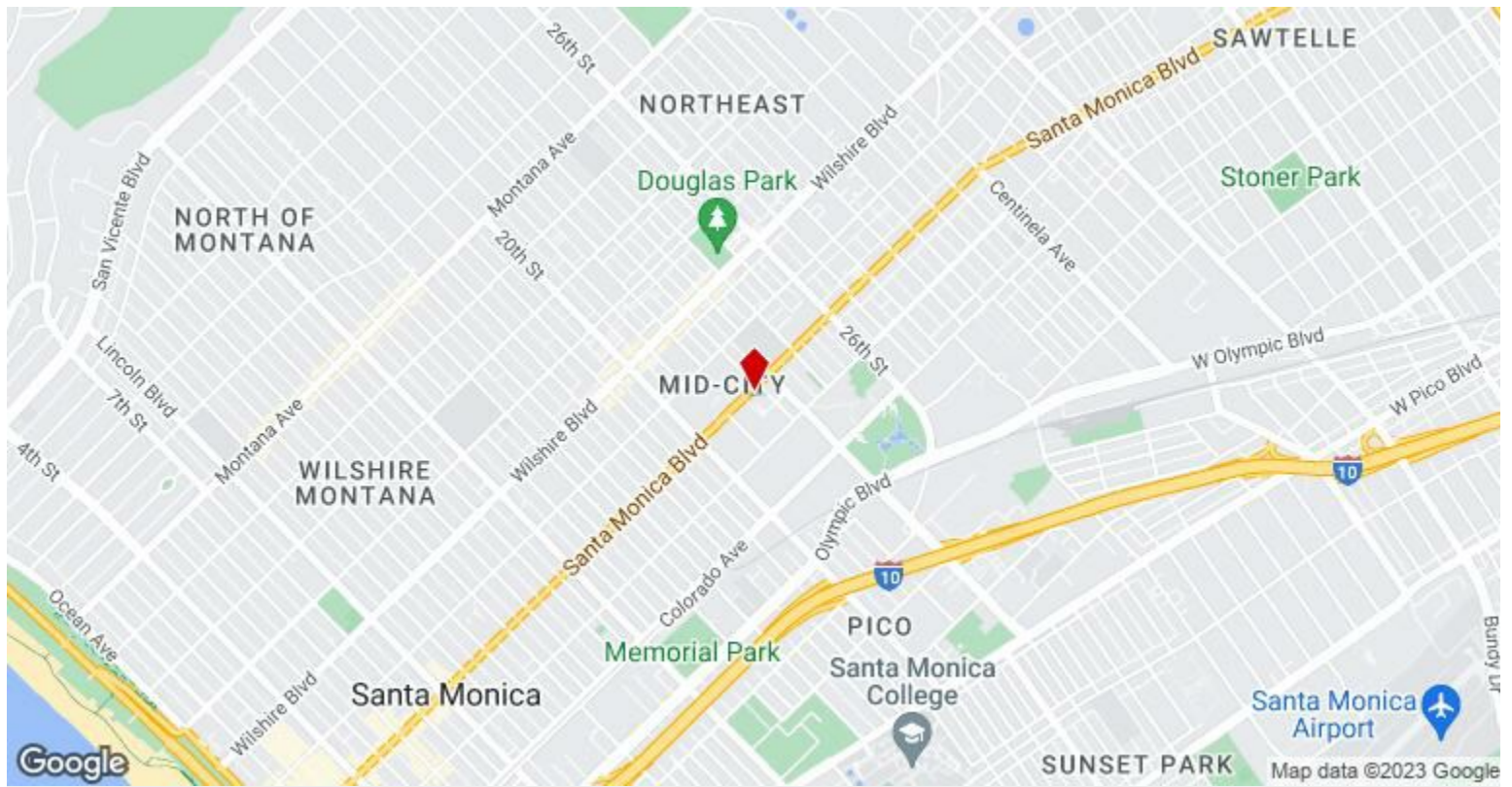
Rental Rate:	\$47.00 /SF/YR
Min. Divisible:	100 SF
Property Type:	Office
Property Subtype:	Medical
Building Class:	B
Rentable Building Area:	1770 SF
Year Built:	1963
Walk Score ®:	94 (Walker's Paradise)
Transit Score ®:	66 (Good Transit)
Rental Rate Mo:	\$3.92 /SF/MO

1st Floor Ste 105

Space Available	100 - 1,770 SF
Rental Rate	\$47.00 /SF/YR
Date Available	To Be Determined
Service Type	Full Service
Space Type	Sublet
Space Use	Office/Medical(Coworking)

We are growing our integrative medical center in Santa Monica, and looking for like-minded practitioners to join our group.(1,770 sf) Holistic medical office space, shared rental available in Santa MonicaOur holistic, primary care medical group consists of multiple practitioners, and we are looking for a few more to join our growing center, as a shared rental for your private practice. Our large office offers a spacious reception and waiting room with wonderful natural light and large double-sided tranquil water fountain, nine treatment rooms of varied dimensions, depending on your requirements, a carefully curated retail space, and a tenth room reserved as your shared practitioners' private office with abundant natural light and well-planned storage/shelving.In the wake of the coronavirus pandemic, we incorporated safety practices recommended by the CDC, WHO, OSHA, NCCAOM, and AANP including amongst numerous modalities and protocols.We are seeking holistic:- medical doctors (MD)- doctors of osteopathy (DO)- acupuncturists (LAc, DAOM)- naturopathic doctors (ND)- nutritionists and/or registered dietitians (RD)- chiropractors (DC) and/or applied kinesiology practitioners (AK)- ayurvedic doctors- physical therapists (PT), sport medicine and/or rehab- homeopathic doctors- bodywork specialists, rolfers, reflexologists, craniosacral practitioners and/or massage therapists- health and wellness coach- othersApplicant must be enthusiastic to share office space and work with other integrative healthcare professionals that includes acupuncturists, naturopathic doctors, medical doctor, thermographer, and nutritionist.We are:* in the heart of the medical district in Santa Monica, located on the ground level of a four-story medical building location on Santa Monica Blvd in Santa Monica across the street from St. Johns Hospital [near Whole Foods, Trader Joes, Santa Monica UCLA Medical Center & Orthopaedic Hospital, Tower Saint John's Imaging, and many other medical buildings, and coffee shops, and restaurants].* awarded by the city of Santa Monica to be the first eco-friendly medical center in Santa Monica, and among the 1st eco-friendly medical centers nationwide.* professional, friendly, and offer a supportive work environment.Room Dimensions of the 9 treatment rooms with various availability (please inquire): 3 smaller sized treatment rooms @ approx. 71+ sq ft or approx. 7'0" x 10'2"3 medium sized treatment rooms @ approx. 85+ sq ft or approx. 8'6" x 10'2"3 larger sized treatment rooms @ approx. 110+ sq ft or approx. 10'10" x 10'2", or 7'6" x 14'6"Contact us for details regarding renting space with a 2 day per week minimum (for one treatment room, shared private practitioners' room, storage space, and an impressive reception/waiting room). More than one treatment room can be made available. Practitioner rental agreements are available with flexible terms. All treatment rooms come fully furnished (if you prefer), including either a medical exam table or massage table, desk and chair(s), storage space(s), etc. Two rooms also include a sink. One room also includes windows with excellent natural light. There is a restroom available within the suite.We are seeking a practitioner with at least a few years of experience, and a moderately to fully established practice already, but we are willing to work with newer practitioners and/or those just moving into the area if there is a networking and marketing plan.Includes electricity, HVAC, water, DSL (high speed internet) / Wi-Fi,

telephone/fax/copier/scanner, shared office supplies, linen service, cleaning service, creating a profile page with your practice bio and image to be added to our office website managed by media/tech firm PatientPop (located right off Santa Monica's 3rd Street Promenade) including SEO and social media, and much more. Ample surface parking lot available on-site at a very reasonable price. An excellent property manager is also available onsite.www.lotusssm.com For more information, please email letter of intent along with a CV to armm@lotusssm.com. I look forward to giving you a tour of the center, and hearing more about your practice.



2222 Santa Monica Blvd, Suite 105, Santa Monica, CA 90404

We are an integrative medical center in Santa Monica, established in 2007, looking for additional practitioners to sublet office space in a supportive, professional work environment.

Integrative Medicine Shared Office Space Rental Available in Santa Monica (1770 square feet)

Office space now available for your private practice within a well-established, integrative medicine center in the heart of the medical district in Santa Monica. We offer an ideal location near freeways, multiple hospitals, and other medical facilities. Walkable to Whole Foods, Trader Joes, coffee shops, and restaurants. Excellent street parking, plus parking lot in rear, available on-site at a very reasonable price. A proactive property manager is available onsite.

Our modern large office (1770 sq ft) offers a clean, spacious and welcoming reception/waiting room with wonderful natural light and large double-sided tranquil water feature/water fountain, along with a carefully curated health-related retail space, nine treatment rooms of varied dimensions depending on your requirements, and a tenth room with abundant natural light and well-planned storage/shelving reserved as your shared practitioner's work lounge.

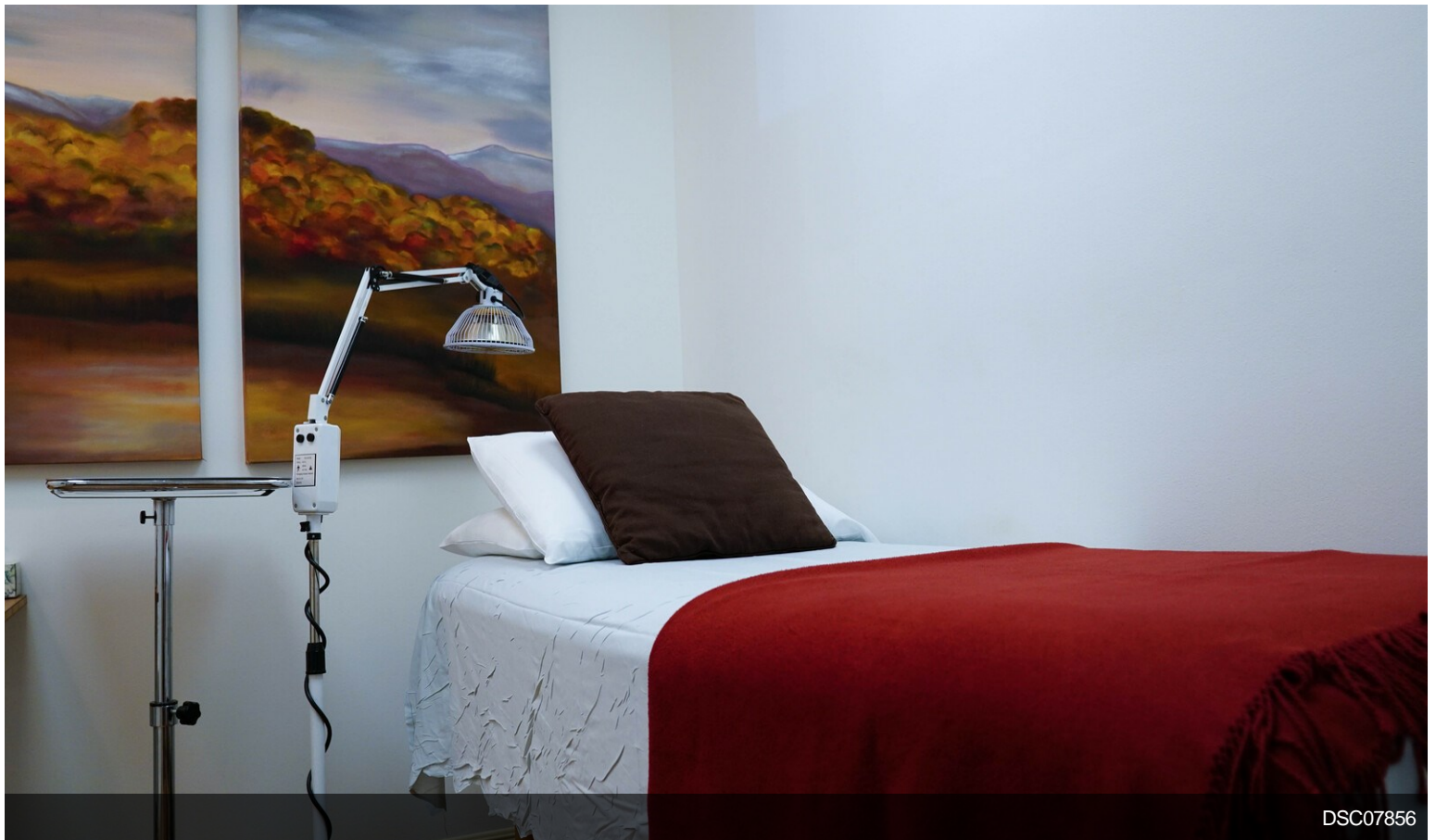
In the wake of the coronavirus pandemic, we incorporated safety practices recommended by the CDC, WHO, OSHA, NCCAOM, and AANP including amongst numerous modalities and protocols.

Rent (please inquire as to specific room dimensions of the 9 treatment rooms with various availability):

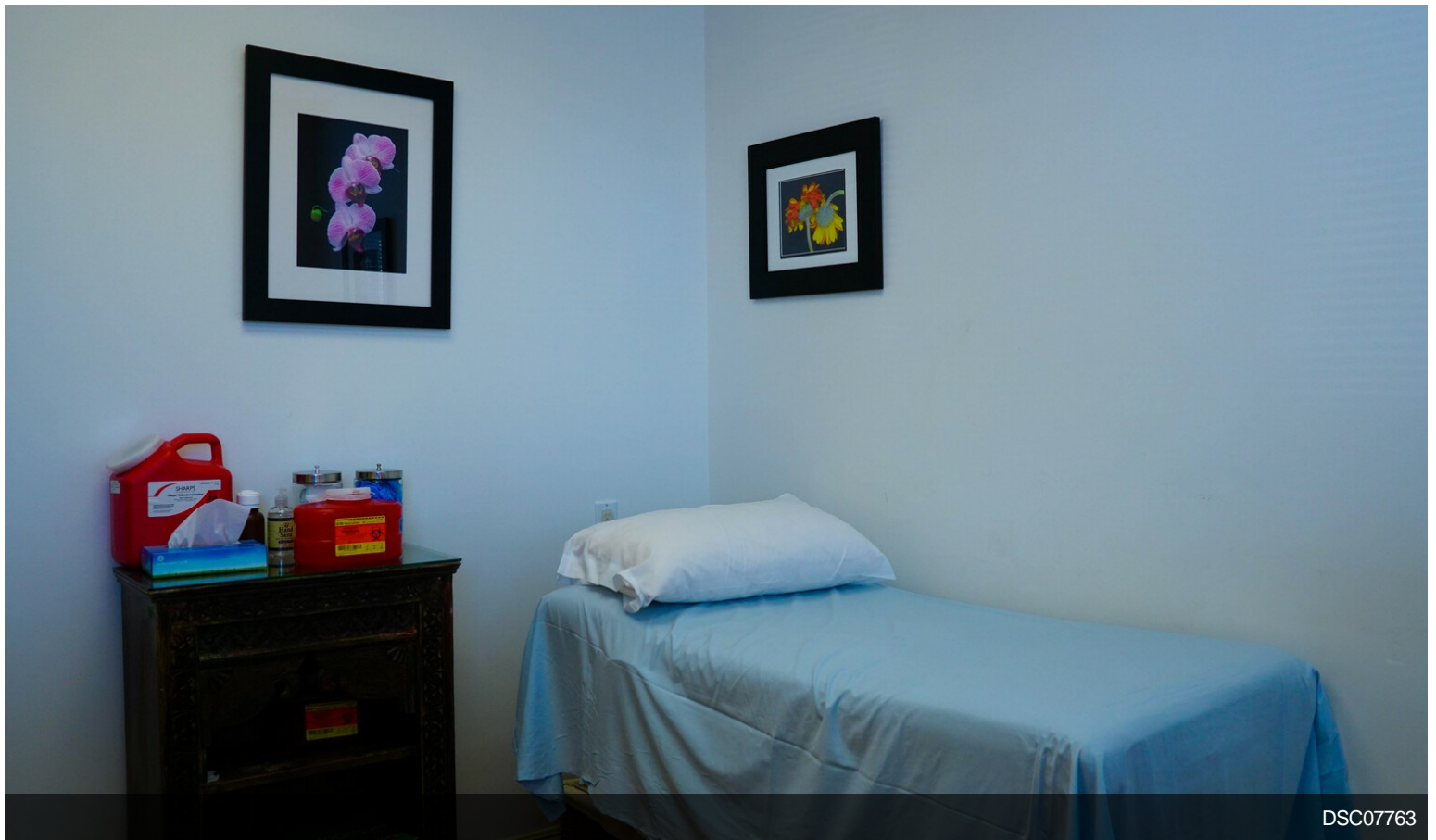
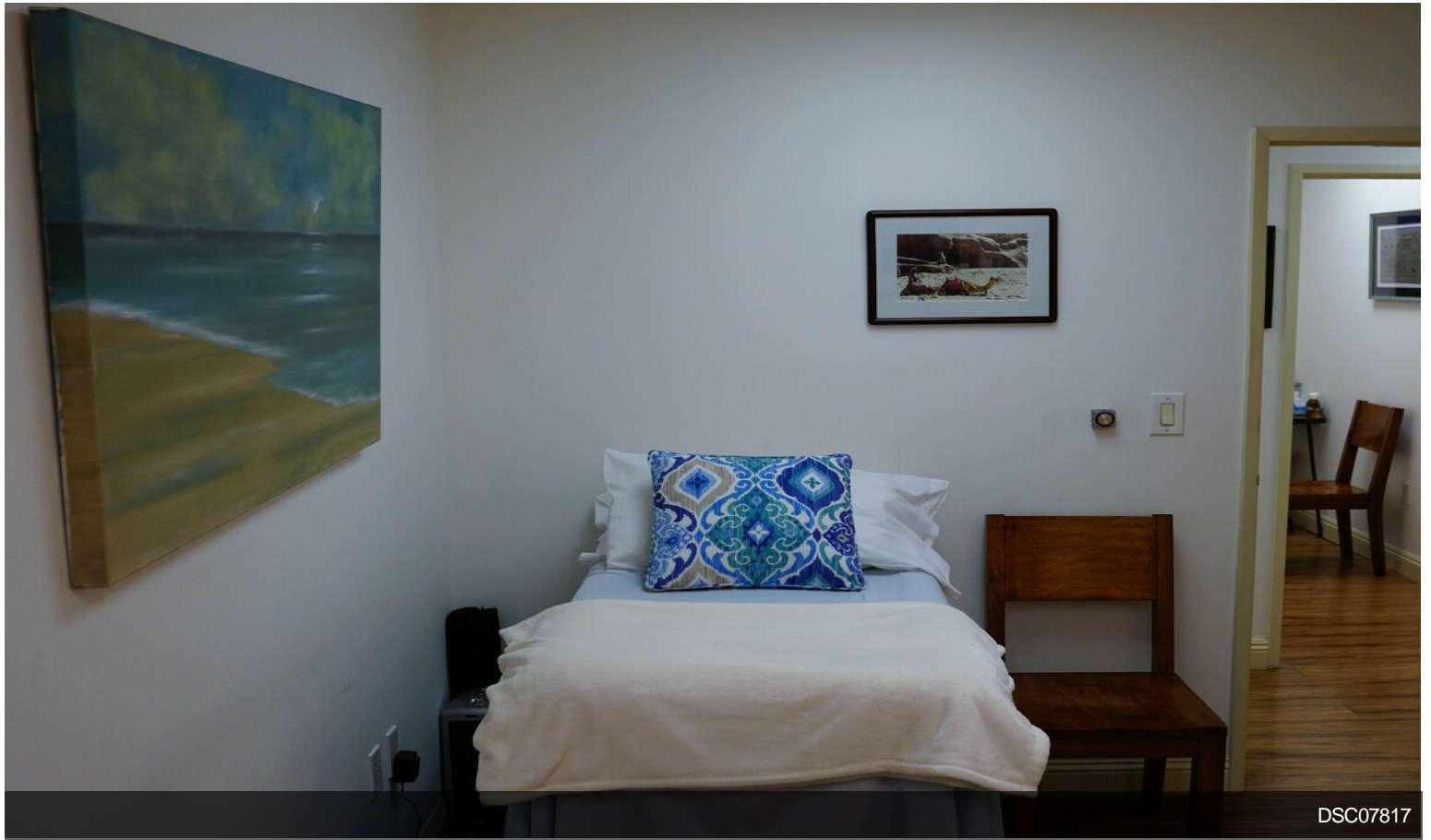
\$115 per day (for use of 1 of our 3 smaller sized treatment rooms @ approx. 71+ sq ft or approx. 7'0" x 10'2"),
 \$120 per day (for use of 1 of our 3 medium sized treatment rooms @ approx. 85+ sq ft or approx. 8'6" x 10'2"), or
 \$125 per day (for use of 1 of our 3 larger sized treatment rooms @ approx. 110+ sq ft or approx. 10'10" x 10'2", or 7'6" x 14'6")

2 days per week minimum (for one treatment room, and shared use of private practitioner's work lounge, storage space(s), and reception/waiting room), with the option to increase the number of days per week given availability. More than one treatment room can be made available.

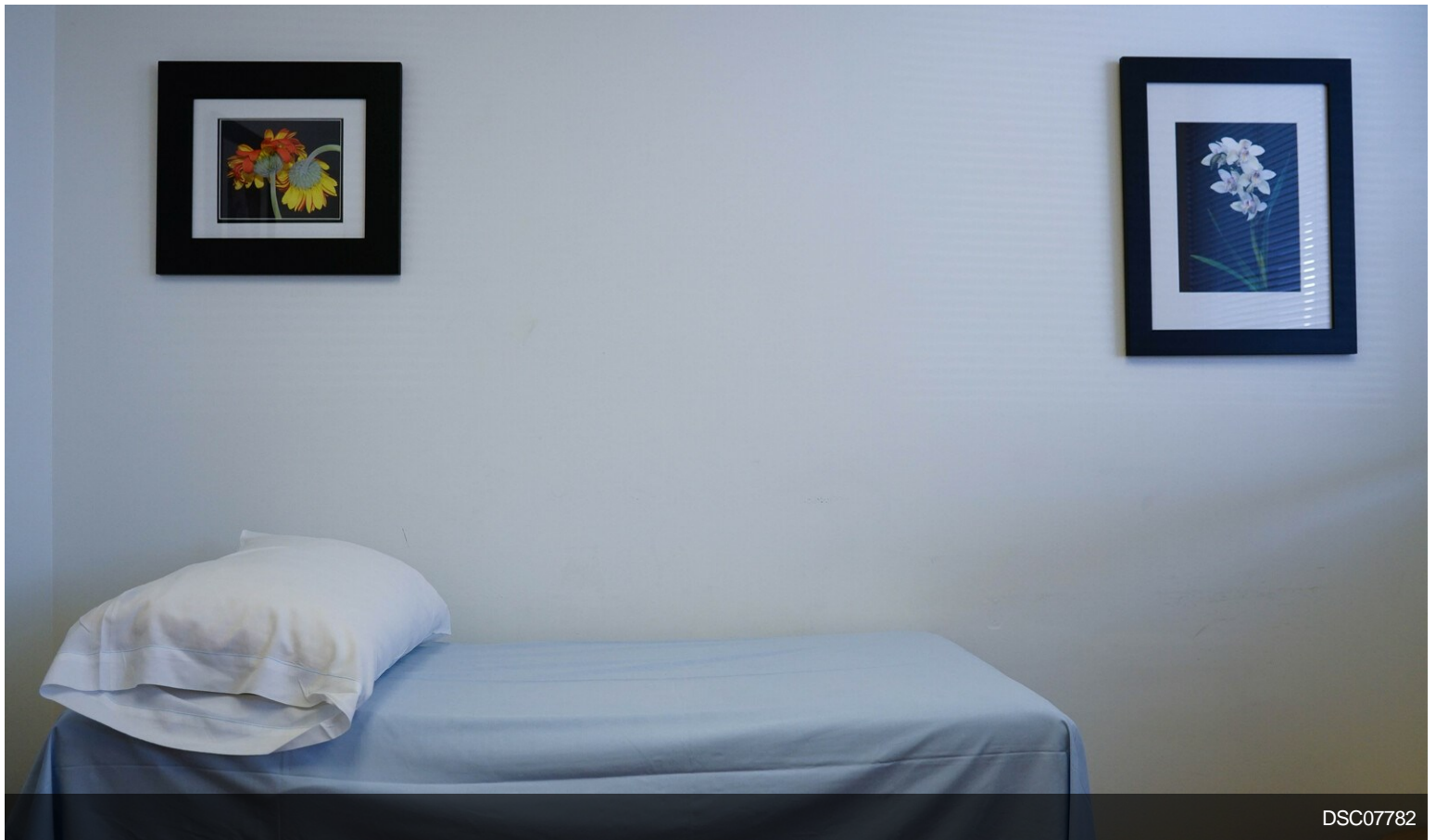
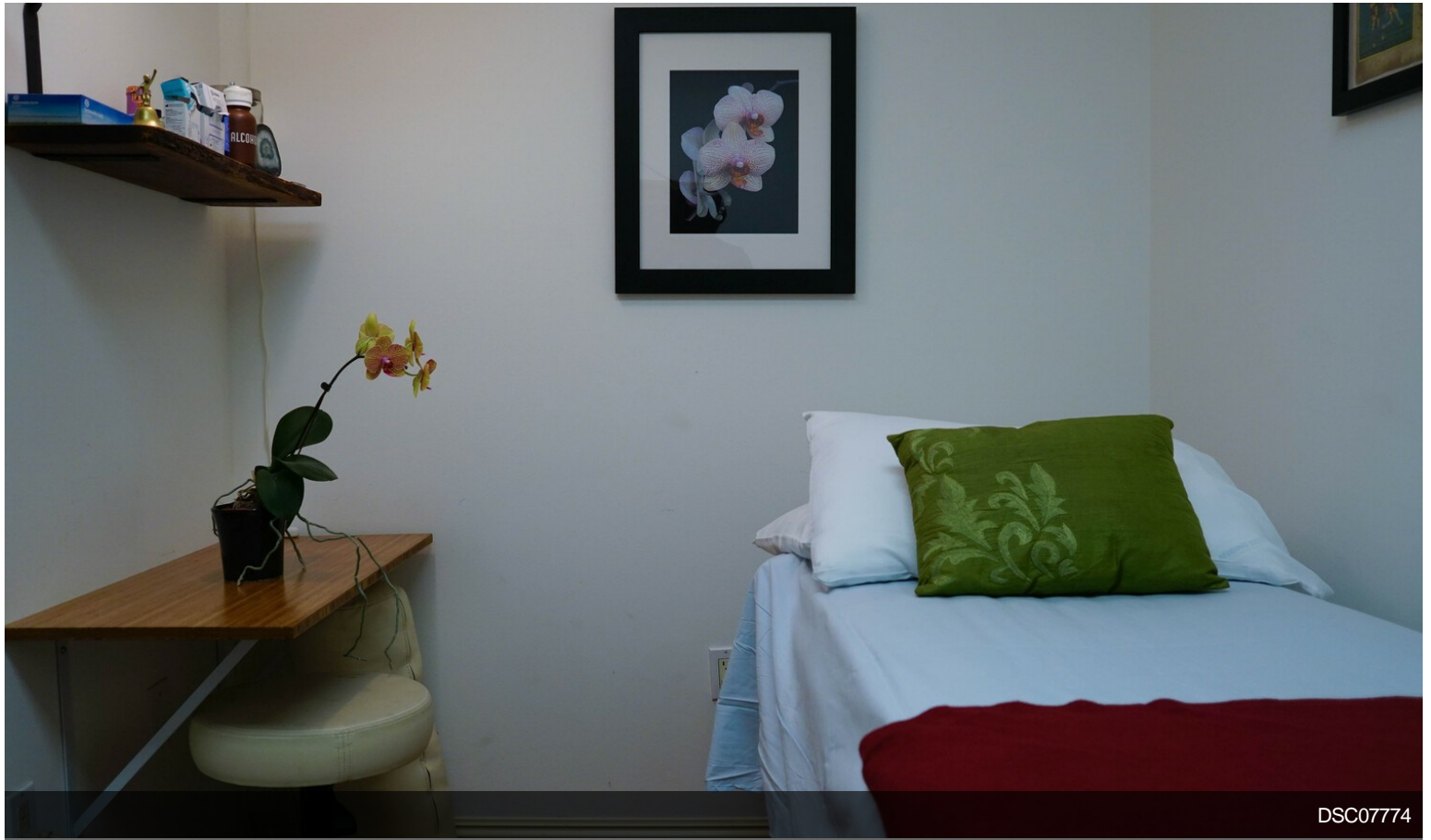
Property Photos



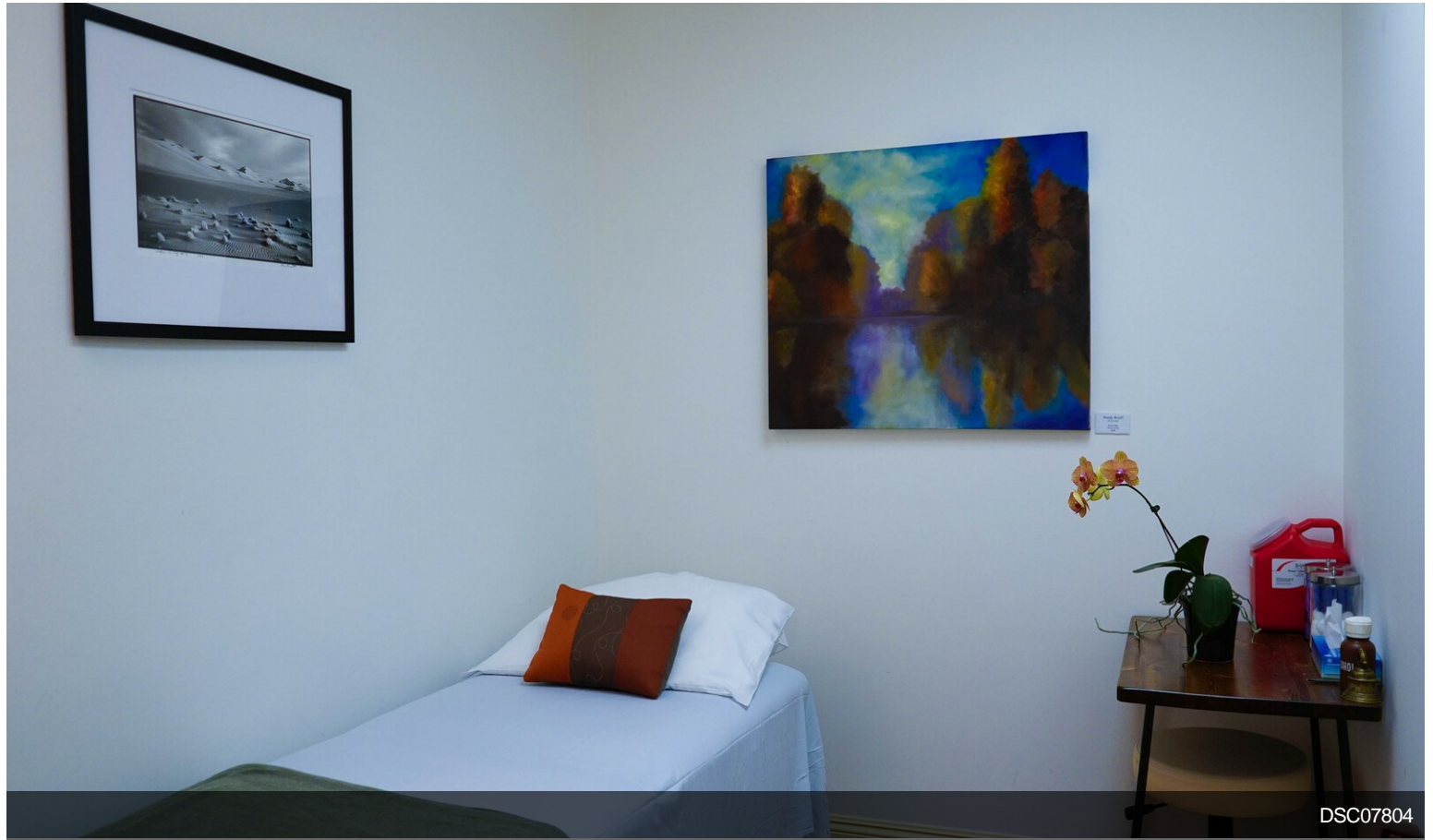
Property Photos



Property Photos



Property Photos



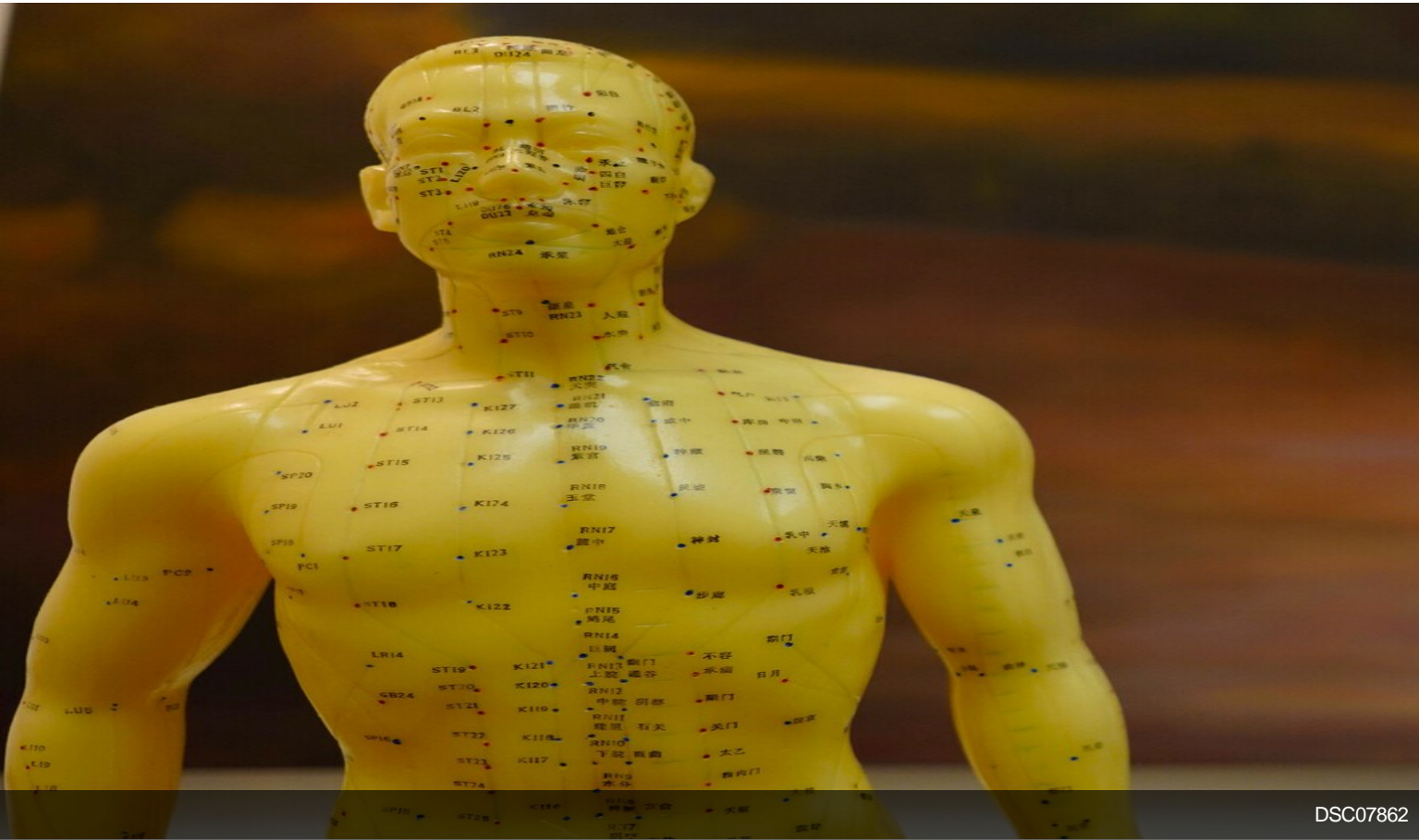
Property Photos



Property Photos

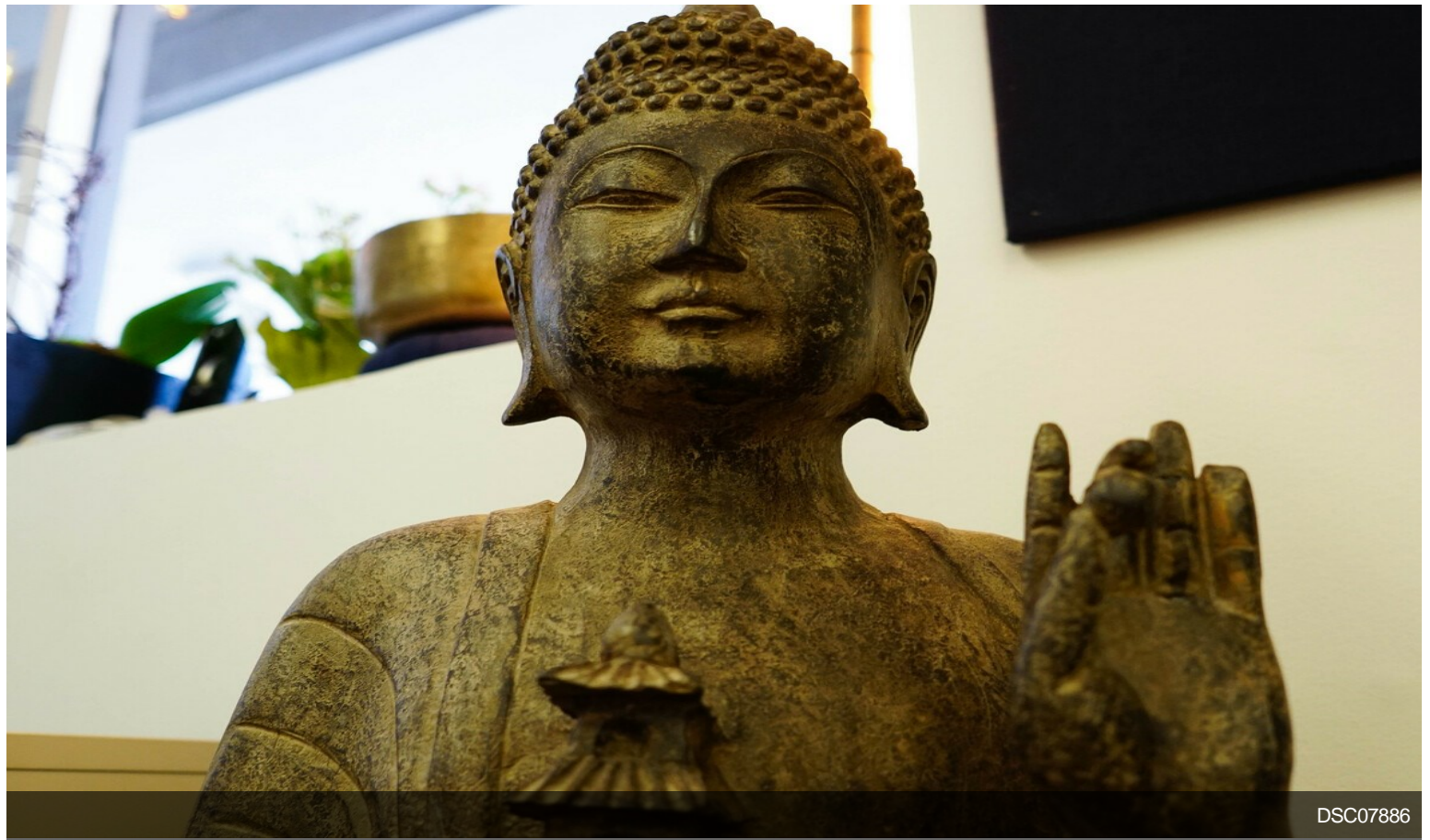


DSC07853



DSC07862

Property Photos



Property Photos



Property Photos



Building Photo



Building Photo

Property Photos



Building Photo



Primary Photo

Property Photos



Building Photo



Building Photo