

YOUR ROLE AS OUR PATIENT:

- ✓ Communicate closely with us
- ✓ Keep us up to date with your medications, immunizations, allergies, conditions, tests, consultations, and any hospitalizations
- ✓ Advise of any changes about you and your family's medical history
- ✓ Inform and authorize your other providers to coordinate with us
- ✓ Participate in decisions about your health
- ✓ Follow treatment plans and self-care management directions
- ✓ Speak up and ask us any questions you may have about your health!



We value your health, that's why we will ensure that you get the greatest value from your health care.

OUR ROLE AS YOUR TRUSTED HEALTHCARE TEAM:

- ✓ Provide a safe and healthy healthcare environment
- ✓ Partner with you in making your healthcare decisions
- ✓ Coordinate with you, your authorized representatives, and other healthcare providers
- ✓ Keep you informed and on-track by providing:
 - Health Coaching
 - Self-Care Management Support
 - Health Resources
 - Preventive Care & Screenings
 - Tailored Care



THESE ARE THE GOALS OF OUR MEDICAL HOME:

- ✓ Helpful, friendly, and respectful staff
- ✓ Clinicians who clearly communicate that we care about you and your health
- ✓ Help you feel confident about taking care of and controlling your health problems
- ✓ Easy access whenever you call for advice or help
- ✓ Develop a personal plan with you to improve your health
- ✓ Notify you and inform you about your lab and imaging results in a timely manner
- ✓ Provide educational materials to help you take control of your health, which can also be found by visiting our website's "Patient Resources" tab
- ✓ Accommodate same-day appointment needs
- ✓ Refer you to community resources that we believe will benefit you
- ✓ Strive to know you and your health history so we may better evaluate treatment options
- ✓ Focus on preventive care to keep you as healthy as possible!

Be Well

PRIMARY HEALTH CARE CENTER

**MULTI-SPECIALTY
DIAGNOSTIC & TREATMENT CENTER**
NYS ARTICLE 28 FACILITY
3007 FARRAGUT RD
BROOKLYN, NY 11210
(Corner of Nostrand Ave & Farragut Rd)

Office Hours of Operation

Monday – Friday | 9:00AM – 5:00PM

General & After-Hours: 718-253-WELL(9355)

Department of Medicine: 718-434-0711

Office Fax: 718-434-0722

Email: info@bewellmedical.com

Website: www.bewellmedical.com

Office Administrator

Anna Goldin, MBA

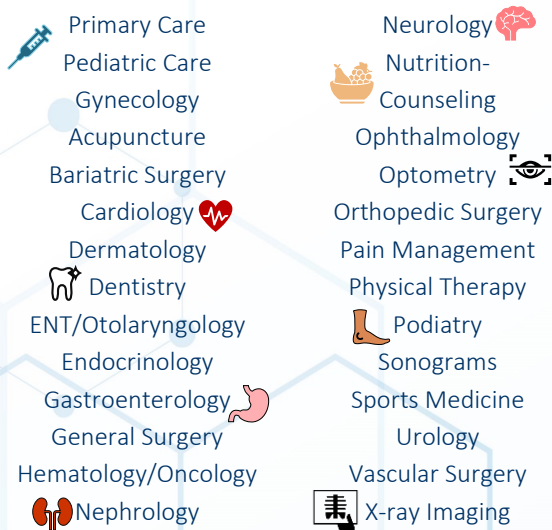
718-253-1582

*Appointments can be scheduled in person,
by phone, or requested on our website.*



**Be Well Primary Health Care Center is
a recognized Patient-Centered
Medical Home (PCMH)**

OUR SERVICES



One place for all your healthcare needs!



Extended Office Hours Offered

Monday – Friday | 5:00PM – 7:00PM

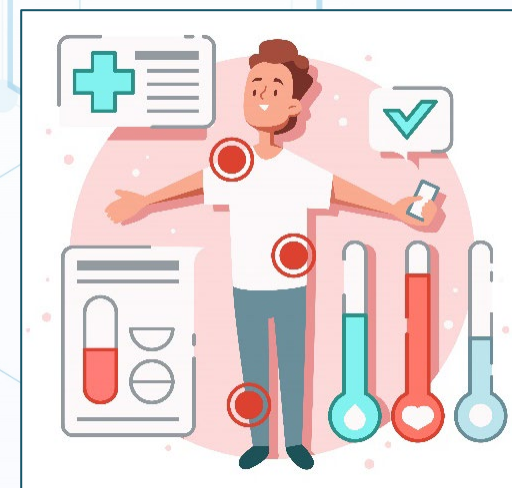
Saturday | 9:00AM – 4:00PM

Live agents are available **24/7** to assist you with your health care needs. You can call or securely text us at 718-253-WELL (9355) anytime!

Same day appointments for sick and emergency visits are welcome. Alternate appointment types such as Telehealth and Telemedicine are available.

ABOUT BE WELL PRIMARY HEALTH CARE CENTER

Be Well Primary Health Care Center, LLC is an Article 28 Diagnostic and Treatment Center that is conveniently located in Flatbush, Brooklyn, New York and has been serving the community since 2004. The center is a one-stop-shop health care facility serving patients of all ages. In addition to providing evidence-based comprehensive primary care services with a strong focus on preventative care, patients have access to an extraordinary range of specialty services including dentistry, ophthalmology, optometry, and physical therapy. Be Well Primary Health Care Center, LLC is a state-of-the-art facility designed to improve patients' overall health outcomes and well-being. The center is licensed by the NYS Department of Health since February of 2004. It is also recognized as a **Patient-Centered Medical Home (PCMH)**, the highest level of recognition by the National Committee for Quality Assurance (NCQA), for its combination of exceptional medical care and outstanding patient communication and services.



WHAT IS A PATIENT-CENTERED MEDICAL HOME?

A Patient Centered Medical Home is a better, easier way to get the primary care you need. Your medical home is not an actual place, it is a partnership that allows you, your doctor, and your care team to work together and improve your health. Your Primary Care Provider leads an efficient and professional team which comprises of medical assistants, receptionists, specialists, and other health care professionals, working together with you at the center of the team. Your team always knows what's going on with your health and helps you get the right care when you need it. We take the time to help you understand and learn to manage and improve your health.



Be Well Primary Health Care Center is a recognized Patient-Centered Medical Home (PCMH)