

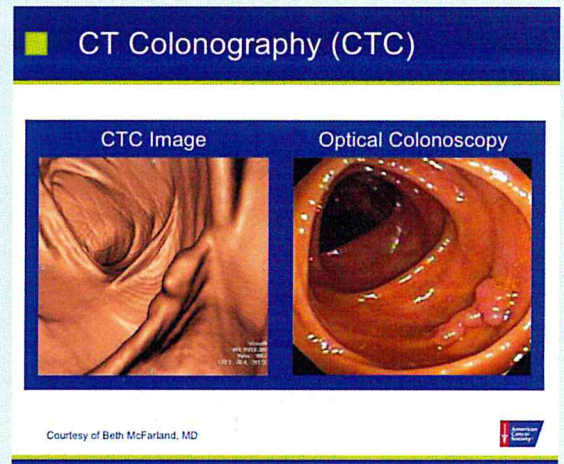
We build our image...one patient at a time.

CT Virtual Colonoscopy

(CT Colonography)

New minimally invasive method for early detection of colon cancer!

- A proven **superior replacement** for conventional barium enema for diagnosis, patient comfort, and radiation dose.^{2,4}
- USPSTF review showing high sensitivity up to 94%, and specificity up to 98% for lesions 1.0 cm or larger.⁶
- Lower risk of complications than standard colonoscopy.
- Improved ability to find cancers and abnormalities beyond the colon!^{1,3,5}
- Same day procedure!
- No need for sedation or general anesthesia.
- Covered by most private insurers!



1. Atkin W, Dadswell E, Wooldrage K, et al: Computed tomographic colonography versus colonoscopy for investigation of patients with symptoms suggestive of colorectal cancer (SIGGAR): A multicentre randomized trial. *Lancet* February 13, 2013
2. Halligan S, Wooldrage K, Dadswell E, et al: Computed tomographic colonography versus barium enema for diagnosis of colorectal cancer or large polyps in symptomatic patients (SIGGAR): A multicentre randomized trial. *Lancet*. February 13, 2013
3. Kim et al. CT Colonography versus Colonoscopy for the Detection of Advanced Neoplasia. *N Engl J Med* 2007; 357:1403-1412. October 4, 2007. DOI: 10.1056/NEJMoa070543
4. Neri E. et al. CT colonography versus double-contrast barium enema for screening of colorectal cancer: comparison of radiation burden. *Abdom Imaging*. 2010 Oct;35(5):596-601. doi: 10.1007/s00261-009-9568-x. Epub 2009 Sep 24.
5. Pickhardt PJ et al. CT Colonographic Screening of Patients With a Family History of Colorectal Cancer: Comparison With Adults at Average Risk and Implications for Guidelines. *AJR Am J Roentgenol*. 2017 Jan 26;1-7. doi: 10.2214/AJR.16.16724
6. US Preventive Service Task Force (USPSTF). Final Recommendation Statement. Colorectal Cancer: Screening. Current as of June 2016. <https://www.uspreventiveservicestaskforce.org/Page/Document/RecommendationStatementFinal/colorectal-cancer-screening2>

Ask your doctor if CT Colonoscopy is right for you!
Have one at Excel today!

*Note, high risk and other select patients may still benefit from standard colonoscopy over other less invasive modalities.
Ask your doctor before pursuing any medical diagnostic exam.*

5626 Gulf Drive • New Port Richey, FL 34652 | Phone (727) 841-8212 • Fax (727) 841-9589

www.excelmedicalimaging.com