



Navigating the new Health Care Marketplace

**BOULDER VALLEY
WOMEN'S HEALTH
CENTER**

2014 Annual Report


WOMEN'S HEALTH
BOULDER VALLEY WOMEN'S HEALTH CENTER



Mission

The Mission of Women's Health is to provide accessible, confidential and comprehensive gynecological and reproductive healthcare, including sexual health services and education.

Transitions

A MESSAGE FROM THE DIRECTOR

What a privilege to help navigate the implementation of the most significant change in our health care system since Medicare was passed in 1965. The expansion of health insurance coverage included in the Affordable Care Act became fully effective in January 2014 and has now resulted in over 13 million Americans having access to healthcare who did not before.

At Women's Health, this has meant that a significant portion of our patient population now has the safety net

of insurance coverage. At the beginning of 2014, about 15% of our patients had insurance coverage, but by the end of the year that increased to almost 50%.

Those patients no longer need to

fear a cancer diagnosis or a catastrophic injury that would likely bankrupt them. They now have the ability to follow up on treatment recommended by our providers. And our organization can use new revenue streams to continue to fully subsidize care for those who remain uninsured or can't use their insurance because of confidentiality concerns, like some of our teens and young adults.

It was also exciting to participate in the release of a study of the Colorado Family Planning Initiative (CFPI). Women's Health was the first participant in the CFPI

“Newly insured patients no longer need to fear a cancer diagnosis or a catastrophic injury that would likely bankrupt them.”

(started at Women's Health in 2007 and statewide in 2009), a program to provide Long-acting Reversible Contraception (LARC) to women and teens most vulnerable to unintended pregnancy. The results showed a remarkable decrease of 40% in teen births statewide and 35% decrease in teen abortions, as well as significant cost savings to the state. National headlines proclaimed the importance and success of the CFPI, and Women's Health was prominently featured in several news stories locally, nationally and abroad. While it was nice to be recognized for our cutting edge work, the real story remains the impact that is evident when women and teens have access to the services Women's Health provides.

Despite these successes, gaps still remain in access to reproductive health care. Women's Health is committed to assuring that even those without insurance, even those

without financial resources, will stay in control of their reproductive and sexual health when they receive high quality healthcare at Women's Health.

With gratitude for your support,



Allison Paige Photography

A handwritten signature in black ink that reads "Susan B. Levy". The signature is fluid and cursive, written over a white background.

Susan B. Levy, Executive Director

2014 Major Accomplishments

AFFORDABLE CARE ACT (ACA) IMPLEMENTATION

Medicaid Enrollment

Thanks to expanded Medicaid eligibility under the Affordable Care Act, many Women's Health patients became eligible for Medicaid for the first time starting in Jan. 2014. Others whose incomes were slightly too high for Medicaid qualified for a subsidized health insurance plan through the state exchange, Connect for Health Colorado.

To facilitate patient education and enrollment, Women's Health partnered with Boulder County Housing & Human Services to locate a bilingual Medical Program Specialist on-site at our Boulder and Longmont clinics. **Over 300 applications for Medicaid/CHP+ and food assistance were completed in 2014**, easing access to critical benefits for our patients.

For those patients ineligible for Medicaid, the enrollment specialist was able to direct them to Connect for Health Colorado, where they could determine their eligibility for purchasing health insurance with government subsidies.

The enrollment specialist also did outreach at community events and health fairs to spread the word about on-site Medicaid enrollment at Women's Health.

Meaningful Use Attestation

Increasing our Medicaid population qualified Women's Health to receive a "Meaningful Use" incentive payment from the federal government for adopting and effectively utilizing our electronic health record (EHR). Meaningful Use is the use of EHR to improve quality, efficiency, and coordination of care.

Women's Health began using an electronic health record in 2010 and through our participation in the Integrated Physician Network (IPN), we are interconnected with many other local medical practices and hospitals. **In 2014, Women's Health qualified 8 of our medical providers for Meaningful Use.**

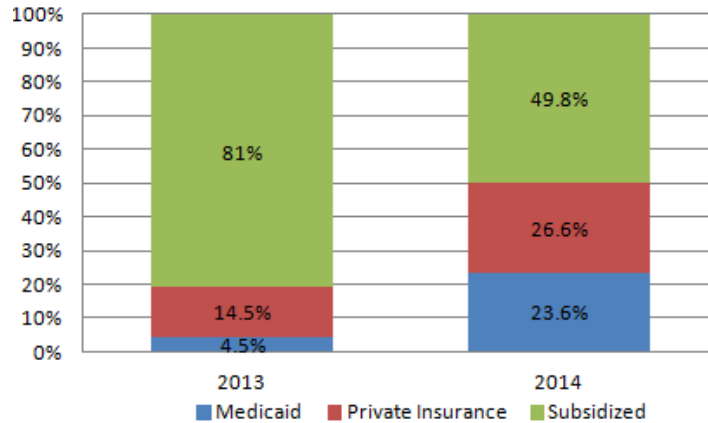


Photo by Eliza Karlson

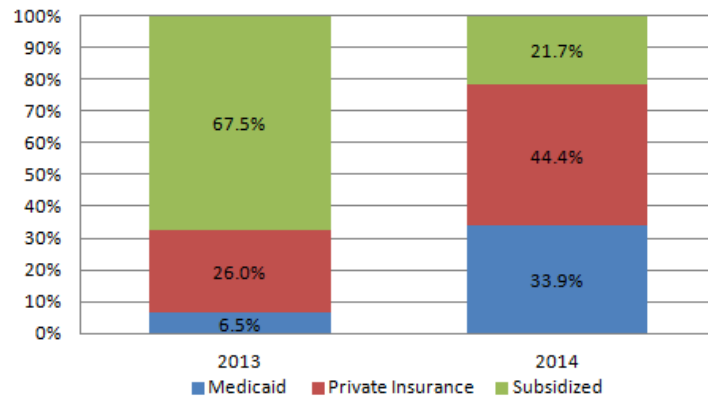
2014 Major Accomplishments

ADAPTING TO NEW FUNDING STREAMS

More Patients Using Medicaid



Revenue Sources More Evenly Distributed



“This has been a miracle for me.”



I came to Women's Health seeking medical care for an urgent problem but had no insurance. The doctor who saw me had me meet with the Medicaid specialist, who helped me complete an application. This was the first time I'd ever applied for Medicaid and I didn't think I was going to qualify. I was surprised when I did!

As a single mom of two kids, it has been hard for me to access healthcare due to my financial problems and I was not able to afford my treatments. With the help of Medicaid, I had surgery done and that helped to stop the bleeding and all the problems that were preventing me from maintaining my job.

I now will be able to keep a full time job and take care of my two kids. This has been a miracle for me. Thank you all.

~Rosario Cervantes
Women's Health patient

“There is something so appealing to know that I am set for 10 years.”



Photo by Eliza Karlson.

I chose a LARC (Long-Acting Reversible Contraceptive) method because my life is so busy I can't even remember to eat breakfast, let alone take a pill at the exact time everyday.

If it wasn't for Teen Clinic, I don't think I could have gotten an IUD. There was no way that my 16-year-old self could have afforded one.

There is something so appealing to know that I am set for 10 years. So many people talk to me and panic about how the condom broke and I'm glad that I don't have to deal with that when it comes to pregnancy prevention.

~Tika Mahot
Teen Clinic patient

2014 Major Accomplishments

COLORADO FAMILY PLANNING INITIATIVE

Women's Health was proud to be a key player in the statewide program credited with a 40% decline in the teen birth rate and a 35% drop in the teen abortion rate in Colorado, including a 49% drop in teen abortions in Boulder County.

The program, the Colorado Family Planning Initiative, provided Long-acting Reversible Contraception (LARC), such as IUDs or implants, to low-income women and teens at low or no cost. Three-quarters of the overall decline was among young women served by clinics that participated in the CFPI program from 2009-2013.

Women's Health was the first medical provider in the state and the only provider in Boulder County to participate in this groundbreaking program. In fact, the LARC program was first piloted at Women's Health beginning in 2007.

In 2014, the Colorado Department of Public Health and Environment released

the remarkable results of this program, generating media coverage for CFPI and for Women's Health in the national and international press, and an award for CFPI from the National Family Planning and Reproductive Health Association.

Women's Health has long been at the forefront of educating teens and young adults to think long-term about their contraceptive needs. Removing the barrier of cost increased access to these LARC methods, which are effective for 3-10 years, resulting in positive outcomes for women, teens, families and society.

State officials say the LARC initiative has not only helped thousands of young women avoid unintended pregnancy, it has also saved the state millions of dollars in expenditures associated with teen births—\$42.5 million in public funds in 2010 alone based on the latest available data. Unfortunately, the private funding for this program expired June 30, 2015.

Programs & Services

FAMILY PLANNING & GYNECOLOGY

Women's Health provides family planning and gynecological care on a sliding scale which slides to \$0 for the lowest income patients. **In 2014, Women's Health served 4108 patients in our Family Planning/Gyn programs.**

Sliding scale family planning/gyn services include annual exams/Paps; birth control, including long-term, permanent, and emergency contraception; testing and treatments for sexually-transmitted infections (STIs); pregnancy tests and all-options decision counseling; breast exams and referral for free mammograms for women who qualify; and menopausal care.

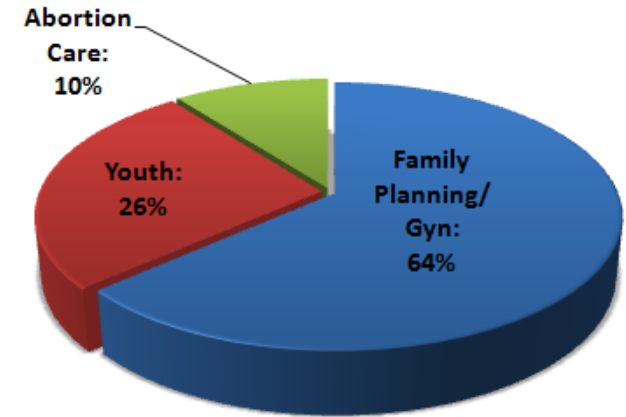
Specialized Gynecology

In addition, our Medical Director, a board-certified Ob-Gyn, provides specialized gynecological care for gyn disorders or abnormalities. Complex gyn treatments include colposcopy, LEEP, cryosurgery and endometrial biopsies. Our physicians can also provide permanent contraception for women (Essure) and men (no-scalpel vasectomy).

Depression Screening

In 2014, we implemented depression screening and streamlined our referral process to Mental Health Partners. As a medical home for many of our patients, we treat the whole patient by screening and referring for medical needs outside of our scope of practice. Once an underlying mental health issue is identified, our case manager can assist our patients in finding an appropriate mental health provider.

Patients Served in 2014 Clinicwide



| | |
|-------------|-------|
| ■ FP/Gyn: | 2907 |
| ■ Youth: | 1201 |
| ■ Abortion: | 476 |
| Total = | 4584* |

*Some patients seen in more than one program.

Programs & Services

BREAST HEALTH PROGRAM

Through our Breast Health program, Women's Health offers free breast and cervical cancer screenings, including mammograms, to low-income and uninsured women. Primary funding is provided by the Women's Wellness Connection (WWC), a federally funded, state-administered program. To qualify, a patient must be under 200% of the Federal Poverty Line, documented, and between the ages of 40–64.

For patients not eligible for WWC because of age or immigration status, Women's Health utilizes funding provided by individual donors and the following funders: Foxy Lady Fund, Hospira, and the Mann-Freeman Family Foundation.

In 2014, Women's Health saw 217 patients in our Breast Health program, resulting in 4 diagnoses of breast cancer. Utilization of this program declined 20% in 2014 because of expanded access to health insurance or Medicaid coverage of these services, thanks to the Affordable Care Act.

New Relationships

In 2014, Women's Health welcomed two new Breast Health funders: Hospira, who awarded us a \$10,000 grant, and the Mann/Freeman Family Foundation, who generously matched contributions to Breast Health during the month of October, helping us reach a total of \$11,640. Both contributions will allow us to expand our Breast Health program for 2015.

Women's Health also partnered with the Mobile Mammography Unit (the "Mammo Van"), to provide free mammography services on-site to low-income patients at our Longmont clinic.

TRANSGENDER SERVICES

Women's Health welcomes patients of all sexual orientations and gender identities for all services.

Since 2012, Women's Health has also offered specific services for transgender persons, including hormonal therapy initiation and management, referral information for sex assignment surgery, and general preventive health care for trans* individuals. **In 2014, Women's Health actively managed 36 trans* patients.**

Women's Health Medical Director Ruth Weinberg, M.D., is specially trained in providing services to trans* patients. Dr. Weinberg is also a founding member of the Boulder County Transgender Health Task Force, a project of Boulder County Public Health, trans* community leaders, LGBTQ advocacy groups, and health and mental health providers, including Women's Health. **In 2014, the Task Force launched an online Trans* Health and Wellness Resource Guide at www.transhealthbouldercounty.org.** Dr. Weinberg is a featured provider on the site and our Boulder clinic is used in the photos.

Trans is an umbrella term that refers to all of the identities within the gender identity spectrum.*

Programs & Services

ABORTION CARE

Women's Health provides 1st trimester abortion care in the quiet and secluded environment of our Boulder clinic. **In 2014, Women's Health provided care to 476 abortion patients. Of these, 84% chose an in-office abortion procedure, while 16% chose medication abortion.**

Counseling

Women's Health employs a staff of professional Masters-level counselors who provide information, counseling and compassionate support to each abortion patient before and during the procedure. Decision counseling and post-abortion counseling are also available at patient request. In 2014, our counselors provided all-options decision counseling to 14 patients and post-abortion counseling to 9.

Financial Assistance

Because no government funding can be used to subsidize abortion services, Women's Health maintains a private fund to assist women who are unable to afford the full cost of their procedure. Our Reproductive Equality Fund (REF) is funded entirely through donations from caring individuals in our community. **In 2014, Women's Health provided \$35,400 in financial assistance to 169 patients (37%), thanks to funding from the REF, the National Abortion Federation, and the Freedom Fund, a project of the Mountain Desert District of the Unitarian Universalist Association.** The average amount of assistance was \$210.

Credentials

Women's Health is certified by the National Abortion Federation and is a founding member of the Feminist Abortion Network, the group of remaining 13 nonprofit, independent, feminist-based abortion clinics in the U.S.

"I know this was the right decision for me."

I am 37 years old and a single mother of two really great kids. I have put myself through school and now work at a hospital.

Needless to say, having another baby was not part of the plan. The father of the baby showed a real lack of commitment through this process, so I had to make decisions about not only the baby but the relationship as well.

The staff have been so supportive, kind and thoughtful. I am truly grateful for their presence and kind words.

I know this was the right decision for me, and I am so grateful that I am able to make this decision for myself. Thank you.

~Women's Health abortion patient
(name withheld for confidentiality)

Programs & Services

YOUTH SERVICES, Clinical

Teen Clinic

Women's Health provides confidential reproductive and sexual health services for youth under age 20. **In 2014, Women's Health served 1201 patients in our Boulder and Longmont Teen Clinics.** All services are free of charge for patients under age 18, and free or low cost for 18-19 year olds. Teens may also use insurance. A Medicaid specialist is also on site to assist 19 year olds who may be eligible for Medicaid enrollment.

In January 2014, Women's Health improved accessibility for our teen patients by welcoming youth during any of our regular adult Family Planning hours. Previously, teens were seen only during Teen Clinic hours. After a survey showing that 80% of our teen patients said they would visit the clinic during adult hours, teens are now able to make appointments any time the clinic is open. For those who still prefer time reserved exclusively for teens, our Boulder clinic continues to offer "Teen Only" hours on Saturdays and our Longmont clinic on Mondays.

This year, our Youth Services staff and clinicians collaborated on creating a comprehensive Teen Clinic Manual, which incorporates best practices for providing health care to adolescents and assures continuity of care among all staff who work with teens.

Home Based Contraception

HBC is a collaboration with Boulder County's GENESIS program to help prevent subsequent pregnancies among already-parenting teens. A Women's Health nurse provides contraception to teen mothers during home visits, eliminating barriers of transportation, child care and cost. **Out of 28 clients in the program during 2014, 100% avoided a repeat unintended pregnancy.**



Photo by Eliza Karlson.

Programs & Services

YOUTH SERVICES, Education

Community Health Education

Our Community Health Educators provide medically accurate, scientifically based comprehensive sexuality education in local classrooms, as well as information and resources for teachers, parents/guardians, and youth-serving agencies. **In 2014, our health educators provided 361 classroom presentations to 8672 students in the Boulder Valley and St. Vrain Valley School Districts.** In addition, Women's Health provided presentations to students in the I Have a Dream program, presented "iCuidate!" a 6-week HIV-prevention curriculum for Latino/a youth, and co-led an "Askable Adult" training for parents and adults who work with youth.

Sexual Health & AIDS Awareness Peer Education (SHAPE)

High school youth in SHAPE receive training in sexual health and prevention and, in turn, educate their peers. **In 2014, 17 SHAPers, including nine LGBTQ youth, donated 1753 hours, led 19 presentations, and reported 4028 one-on-one peer interactions.** SHAPE is a collaboration of Women's Health and Boulder County AIDS Project, and is funded, in part, by the City of Boulder's Youth Opportunities Program.

Youth Technology Initiative

The Youth Services program uses popular technologies to reach teens where they live. In 2014, teens asked our staff anonymous sexual health questions and received medically accurate answers through our **Text Line (1590 questions asked)** and **interactive Q&A section of the TeenClinic.org website (665 questions asked)**. Youth Services also maintains an active Social Media presence on Facebook, Twitter and Instagram.

"It's crazy how many people need this information and can't get it."



Photo by Eliza Karlson

I've been interested in sexual health since 7th grade when I did a project on birth control for National History Day.

I'm a good listener and people have always come to me to talk about things. Being in SHAPE has given me correct, reliable information that I can give back to my peers.

It's crazy how many people need this information and can't get it. It's easier for teens to come to someone their own age with questions, and it's great to be that person that people know they can come to.

SHAPE has sparked an interest for me in working in the health field. After college, I'd like to join the Peace Corps and then work in public health or reproductive health. SHAPE has inspired me to do this work in the world.

~Ali Pyle
Fairview H.S. student and SHAPE Member

“I’ve witnessed clients treated with kindness and professionalism.”



Since 2012, I’ve looked at humanity through a more loving lens. That’s when I started volunteering at BVWHC.

Exposure to the clinic’s inner workings has forever changed my perspective on health care. I’ve witnessed clients treated with kindness and

professionalism, without judgement. I wish the whole world would work that way.

I feel part of a larger family now. Not only with the BVWHC staff, but with all of the shapes, colors and sizes that humanity takes. Thank you BVWHC.

~Nanci Hill Feeney
Women’s Health volunteer since 2012

Volunteers & Outreach

Volunteers contribute to the success of our organization and its mission in a variety of ways. Our Board of Directors volunteer their time to provide oversight, planning and support to the organization. SHAPE members provide sexual health and prevention information to their peers (see p. 9). Clinic volunteers perform a variety of functions—working a weekly shift in the clinic, volunteering on one-time projects or assisting at special events.

VOLUNTEER HOURS DONATED in 2014

| | |
|-----------------|-------------|
| Administrative | 412 |
| Family Planning | 278 |
| Abortion Clinic | 407 |
| SHAPE | 1753 |
| Total | <u>2850</u> |

Value = \$73,188.00*

*According to the Independent Sector website, the average value of a volunteer hour for 2014 in Colorado is \$25.68.

Women’s Health maintains a strong presence in the community so that those who need us know about us. Our staff, volunteers and Board members table at health fairs, college campuses and community events, with a special focus on reaching underserved populations. **In 2014, Women’s Health had a presence at 47 events, including 9 Latina-focused events and 8 LGBT-focused events, reaching a total of nearly 4500 people.**

Longmont

In order to better serve residents in and around Longmont, Women's Health opened a second clinic location in Longmont in 2006.

In 2014, we were pleased and grateful that the Longmont City Council reinstated City funding to our clinic after a two-year absence, due to a few vocal Women's Health opponents who had created controversy over our services to teens. At a January 2014 meeting, City Council members heard testimony from Women's Health patients, staff, and supporters. Some spoke about the importance of Women's Health as a Medicaid provider and as a referral source for the schools. Others spoke about the need for subsidized family planning services and the fact that no other medical provider in Longmont provides an entirely free and confidential Teen Clinic or a sliding scale that slides to \$0 for the lowest income patients. In the end, **the City Council voted 6-1 in favor of restoring our full funding** – a win not only for Women's Health, but for the people we serve.

In 2014, we continued to expand our collaborations within the local community and made the following improvements to our Longmont site:

- Improved signage on 21st Avenue and improved location information on our website to make the clinic easier to find.
- Increased Community Health Education outreach to SVVSD schools.
- Organized and hosted the first Longmont Health Fair in collaboration with other local agencies, nonprofits and service providers.
- Surveyed community partners about unmet community needs.
- Partnered with the Mammo Van to bring free on-site mammograms to Longmont.

Community Collaborations

Women's Health staff actively participate in many local and statewide organizations:

- Association of Agency Executives
- Human Services Alliance
- Boulder County Health Improvement Collaborative
- Colorado Family Planning Initiative
- Colorado Reproductive Freedom Coalition
- iPN physician network
- Boulder County Trans Task Force
- Boulder County Latino Coalition
- Parents Involved in Education
- St. Vrain Community Council
- Red de Profesionales (Bilingual providers in Boulder County, hosted by AMISTAD)
- Healthy Colorado Youth Alliance/Colorado Youth Matter
- Boulder County Sexual Health Coalition
- Boulder County AIDS Project Programs Committee
- Boulder County Allies for Inclusivity
- St. Vrain Valley Youth Services Alliance
- Community Impact Committee at Foothills United Way
- Family Self Sufficiency Program Coordinating Committee

Financials

FINANCIAL STEWARDSHIP

In 2014, we paid off our Longmont mortgage, leaving us entirely debt free.

2014 Statement of Financial Position

ASSETS

| | |
|--|--------------------|
| Cash, Accounts/Grants Receivable, Inventory | \$594,045 |
| Land, buildings, equipment (net of accumulated depreciation) | \$1,245,450 |
| | <hr/> |
| Total Assets | \$1,839,495 |

LIABILITIES & NET ASSETS

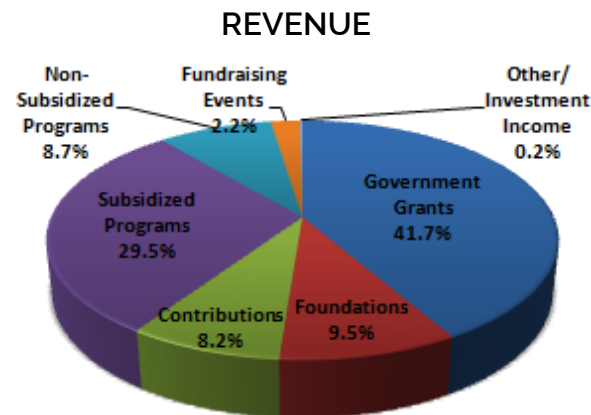
| | |
|---|--------------------|
| Short-term (Accounts payable, accrued expenses) | \$145,352 |
| Long-term (mortgage, notes and capital leases) | \$0 |
| | <hr/> |
| Total Liabilities | \$145,352 |
| | |
| Net Assets (Restricted and Unrestricted) | \$1,694,143 |
| | <hr/> |
| TOTAL LIABILITIES AND NET ASSETS | \$1,839,495 |

Financials

2014 Statement of Activity

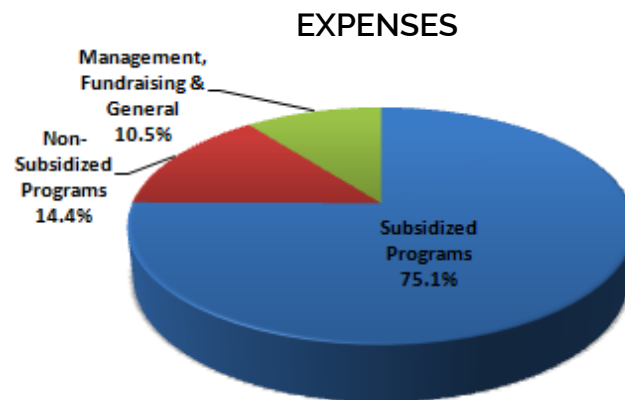
REVENUE

| | Amount | Percent |
|-----------------------------------|--------------------|---------------|
| Government Grants | \$1,021,440 | 41.7% |
| Foundations | \$231,787 | 9.5% |
| Contributions | \$199,543 | 8.2% |
| Subsidized Program Revenue | \$722,988 | 29.5% |
| Non-Subsidized Program Revenue | \$212,536 | 8.7% |
| Fundraising Events (net expenses) | \$53,809 | 2.2% |
| Other/Investment Income | \$6,039 | .2% |
| Total Revenue | \$2,448,142 | 100.0% |



EXPENSES

| | | |
|-----------------------------------|--------------------|---------------|
| Subsidized Programs | \$1,801,400 | 75.1% |
| Non-Subsidized Programs | \$344,839 | 14.4% |
| Management, Fundraising & General | \$251,303 | 10.5% |
| Total Expenses | \$2,397,542 | 100.0% |



EXCESS OF REVENUE OVER EXPENDITURES

(after depreciation) **\$50,600**

Donors

A heartfelt "Thank You" to all the individuals, businesses, foundations and government agencies who help sustain our agency financially. We couldn't do this work without you!

INDIVIDUALS

Abbott, Perry
Ageton, Suzanne S
Ahn, Sarah
Allison, Cynthia
Altschuler, Lynn
Ames, Suzanne & Roger
Anderson, Daniel
Anderson, Rachel
Andes-Georges, Linda & Jean-Pierre
Anievas, Carol & Agustin
Anthes, David
Arbogash, Jennifer
Avery, Bobby & Brenda K
Baccino, Joan
Bach, Johanna & Bernie
Bailey, L R
Barclay, Connie & Bill
Barela, Donna & Daniel
Bashline, Peggy
Becher, David
Becher, Harold & Ingrid
Becker, Ruth & David
Bekoff, Anne
Bell, Barbara
Benecchi, Gianni
Benjamin, Thomas
Bennett, Lisa & Jeff
Bereskin, Gayle
Berg, Gary
Berger, Nina
Berman, Jon
Bernstein, Robin Freeman
Bickman, Louise & Martin
Bierbaum, Paul
Bigelson, Wendy
Birnback, Rebecca
Bishop, Don & Judy
Blumenthal, Tom

Boerkircher, Gabrielle
Bogusky, Alex & Ana
Boland, Catherine
Borgmann, Lisa
Bosak, Patricia
Boucher, Virginia
Bowman, Beth & Don
Boyd, Allison
Bradley, Alice Louise & William
Brandes, Susan
Brandes & Kelley Synnott
Brett, Joan
Brill, Laura
Brindell, Sheralee
Britton, Amy M. & Terry
Brodsky, Julia & Aaron
Brooks, Chris
Brown, Laura
Brown, Mark & Catherine
Brown, Nalini & Daniel
Brown, Trudy B.
Buchanan, Russell & Virginia
Buchanan, Scott & Harnes-Buchanan, Sandra
Bundy, Gregory
Burns, M Kathleen
Burton, Brittany & Stewart,
Nate
Burton, Ed
Bush, Mari
Butcher, Jane
Butler, Joe
Butler, Mark and Maria
Butler, Patricia
Caplan, Elizabeth
Capron, Diane
Cargill, Diane & Myers,
Michael
Carlson, Sheryl

Carnahan, Julie
Carpenter, Julie
Carrizales, Linda
Carsey, Eben
Cartwright, Robbie
Caskey, Susan
Castellano, Dana
Chellos, Daphne
Christopher, Deborah
Christopher, Laura
Christopher, Lindsay
Chun, Dennis M
Cleland, Joan
Clelland, Jeanne
Clements, Anna Bell & George
Coffee, Sue
Cohen, Bonita
Cohen, Sara
Cohen, Sara-Jane & Bill
Cole, Sharon & Ed
Collins, Richard & Reid,
Judy
Connelly, Susan
Connolly, Jamie
Cool, Carmen
Cooper, Donna R.
Corbett, Susan & Kremm,
Steve
Cornell, Eric & Landry,
Celeste
Corsi, Virginia
Cox, Stephen
Crist, Bruce
Crowell, Aaron
Culbertson, James
Curlette, Diane
Curran, Linda
Daly, Kevin
Dangelo, Mary Ann &
Degrand, Thomas A.

Darnell, Kel
Dart, Rita Lundeen
Davis, Jeremy
DeAngelis, Anthony & Dahnke, Lois
DeBroux, Audrey
Decker, Kimberly
DeClerk, Karen
DeKalb-Morgan, Caroline
DeYoung, Heather
Dick, Martha & Donald
Dick, Mary Ellen
Dickson, Stephen & Jody
Dineen, Mary & Masterson,
Sue
Dixon, Linda
Donhar, Margaret & Glenn
Donisvitch, Eddie
Dow, Cherron M
Down, David & Marion
Downing, Lois
Downton, Mary & James
Drapkin, Diane Hall
Drozda-Freeman,
Elizabeth
Ebert Hein, Courtney
Eckland, Warner & Frances
Edgerley-Gibb, Laura
Edwards, Sharon
Ehlers, Michael & Tracy
Eisaguirre, Lynne
Elder, Michael
Ellis, Sally & Homer
Ellis, Steve
Emich, Jennifer & Cohen,
Eric
Emich, Maureen & Dennis
Enyart, Nancy
Espeset, Martha
Fagan, Erica
Farley, Tillman
Fedak, John & Terry
Fedak, Melissa
Feeney, Nancy
Feld, Bradley A. &
Batchelor, Amy
Fenn, Rebecca
Fenton, Jamie & Gabriel
Fetter, Suzanne

Filiss, Elizabeth
Filiss, Grace
Finer, Richard & Alyssa
Fischer, Gerhard & Klose-
Fischer, Ingrid
Fisher, Mary
Fisher, Rebekah & Matt
Fishman, Neil
Flynn, Kitty
Ford, William & Weisblat
Ford, Ann
Foust, Mal
Fox, Kristin
Franklin, Andrew &
Fishman-Franklin, Audrey
Frank-Williams, Melissa
Fraser, Don
Freeman Mann, Susan &
Danny Mann
Freeman, Lisa
Friedman, Sandy
Furman, Hugh Patrick
Gallagher, Alan C.
Gallagher, Casey &
Burwick, Andrew
Gamauf, Kenneth
Gansar, Corinne & Gary
Gardner, Suzanne
Garstang, Ann
Gates, Elodee
Geolfos, Debra L.
Gilbert, Lynn
Gilbert, Miriam
Gill, Elizabeth "Betsy"
Gille, Ellen & John
Gisbo, Carol
Glascock, Chris & Mary
Glass, Kathy
Goblet, Meg
Gocke, Carol & Rob
Goeldner, Jacquelyn
Goff, Kathryn & Scott,
Harold
Goldman, Margery
Goldman, Seth & Nancy
Gonzales, Liz
Goodchild, Heather
Goodrich, Kent & Doris
Gorman, Mary & Fuller,

Paul
Gould, Barbara & Taggart,
Allen
Goulet, Marc
Graw, Esther & Smythe,
Charles
Gray, Jessica
Greenhouse, Ellen & Wall,
Lester
Greenwald, Batya &
Jonathan
Griffin, Nina
Gross, David & Kremena
Gstalder, Barbara
Guzzo, Marla
Hagman-Hazell, Jennifer
& Hazell, Don
Hall-Taylor, Linda
Halpern, Heidi
Hamilton, Susan & Clark
Hammers, Joan
Hankins, John
Hanson, Calvin & Laura
Hanson, Elizabeth
Hanson, Sheril
Harris, Catharine & Richard
Harrison, Sue Ellen
Harvell-Fruhworth, Megan
Harwood, John
Hassler, Donald M.
Hast, Thomas
Havekost, Patricia
Havlat, Ginger
Hayes, Deborah
Headrick, Jeanette W. &
Lewis L.
Hedberg, Natalie &
Vanzandt, Tom
Heiser, Naomi E.
Helwig, Caroline
Henderson, Ruth
Herring, Jackson & Betty
Herschopf Kennedy, Debra
& Kennedy, Harry
Heun, Colette
Hiatt, Paula
Himes, Caroline
Hinebauch, Jon & Liz
Hitchcock, Elizabeth

Hoguet, Diana
Holdaway, Michael &
Angie
Holitzka, Jim & Newman-
Holitzka, Carol
Holmes, Jamie
Hooton, Edie
Howard, Holly
Howe, Kaye
Howell, Pamela
Hoyt, Tom & Caroline
Hunnes, Eileen & Bob
Hunter, Anne-Barrie
Huston, Ray
Hyde, Kevin
Ikeda, Virginia W.
Isbill, Kelly
Jackson, Peggy
Jacobs, Kevin
Hamilton, Susan & Clark
Hammers, Joan
Hankins, John
Hanson, Calvin & Laura
Hanson, Elizabeth
Hanson, Sheril
Harris, Catharine & Richard
Harrison, Sue Ellen
Harvell-Fruhworth, Megan
Harwood, John
Hassler, Donald M.
Hast, Thomas
Havekost, Patricia
Havlat, Ginger
Hayes, Deborah
Headrick, Jeanette W. &
Lewis L.
Hedberg, Natalie &
Vanzandt, Tom
Heiser, Naomi E.
Helwig, Caroline
Henderson, Ruth
Herring, Jackson & Betty
Herschopf Kennedy, Debra
& Kennedy, Harry
Heun, Colette
Hiatt, Paula
Himes, Caroline
Hinebauch, Jon & Liz
Hitchcock, Elizabeth

Knappett, Kip
 Knight, Charles
 Kofford, Renae & Larsen, Brian
 Komhyr, Pam
 Kornblith, Sally
 Kornblum, Nancy
 Koval, David
 Kowalski, Edward
 Kryszak, Randall
 Kube, Robyn
 Kunasz, Chela & Paul
 Lacey, E
 Ladd-Webert, Jessica and
 Webert, Christian
 Lambert, Christie
 Lambert, Poss
 Lander, Ingrid
 Lange, Laurie
 Langhorst, Kate
 Laverty, Nancy & Robert
 Leach, James & Louise
 Leddon, Jeanie & Richard
 Lee, Mi-Kyoung
 Leftwich, Kathy
 Leinbach, Joan & Harold
 Lenth, Charles
 Leonard, Mary & David
 Lerner, Doug
 Lerner, Joey & Alaine
 Lerner, Kimberly
 Levi, Karen & Jeff
 Levison, Harold F
 Levison, Sarah
 Levy, Claire
 Levy, Susan
 Lewenthal, Jane
 Lewis, Suzanne
 Lichtenburger, Kerry
 Linsky, Lois & Jeffrey
 Lirtzman, Diana Gay
 Lloyd, Thomas & Carolyn
 Logevall, Rebecca
 Loose, Linda & Rich
 Lotte, Michael
 Loveman, Robert & Gail
 Lowell-Bellew, Justin
 Lurie, Gail R.
 Macar, Kamilla

Macfarlan, Sherburne
 Machalek, Jolana
 MacMillan, Megan
 Macris, Jim & Lanci-Macris, Angela
 Madsen, Nick & Kathy
 Mah, George & Petrea
 Malde, Caroline
 Maloney, Greta & Palaich, Robert
 Markel, Jay & Carey
 Marquez, Angelica
 Marshall, Ellen & Harwood, David
 Martin, Diane & Craig
 Marzelli, Danielle & Marzelli, Anthony
 Mason, Francene
 Massey, Katie
 Maxwell, Martha L.
 Mayer, Sara & Thomas
 McBeth, Elizabeth
 McCaffrey, Sharon & Frankel, Lee
 McClendon, Robert
 McConkey, Joan
 McCord, Nikki
 McCutcheon, Elizabeth
 McDiarmid, Jennifer & Sterling, David
 Mcelwain, Nancy
 McGrath, Kevin
 McGuire, PJ
 McIntyre, Katherine
 McQuiston, Mary
 McRee, Annie-Laurie
 Meneley, Patty
 Menn, Lise
 Merritt, Shelly
 Meshak, Sarah
 Mettler, Bonnie
 Metz, Pat & Tom
 Mezger, Linda & Bryan
 Miller, Michael
 Miller, Nancy D.
 Miller, Patty A.
 Mitchell, Cynthia
 Mitchell-Brown, Geri
 Moffitt, Lisa

Moore, Mary Sue
 Morlock, Grace
 Morrison, Jojo
 Moses, Michele
 Mundy, Jason
 Mylan, Roberta
 Myman, Robert
 Naegele, Stuart
 Neighbors, William
 Nelson, Beverly & McKay, Sidway
 Nelson, Lisa
 Nelson, Natalie
 Neville, John & Joyce
 Nordback, Kurt
 Norris, Robert & Kathleen
 Northleaf, Susan
 Novak, Donella
 Oakes, Margaret
 Olsen, Gregg H.
 Oncley, Louise Ginsburg
 Osbourn, Michael
 Ostwald, Pat & Tim
 Page, Melody
 Palmer, James & Sue
 Panetta, Toni
 Park, Lauren
 Parsons, Emily & Trimble, Stephen
 Payne, Anna
 Pedersen, John
 Pedersen, Lisa
 Petersen, Susan
 Peterson, Susan
 Phillips, Carolyn & Tom
 Piller, Marion
 Poehlmann, Harry & Eleanor
 Pois, Anne Marie
 Polini, Jessica
 Pollet, Sally
 Pow, Jeanine M.
 Powell-Ashby, Sally
 Pribyl, Pat & Jim
 Pringle, Jennifer
 Pruitt, Ann
 Rabson, Diane
 Radelet, Lisa & Mike
 (continued on p. 17)

“As the father of two amazing boys, I feel strongly that my sons should grow up in a world where women control their own bodies.”



I learned about Women's Health while I was on the Board of the Boulder County AIDS Project (BCAP) through the wonderful SHAPE program, which is jointly operated by BVWHC and BCAP. In a meeting between the organizations, I was struck by Susan Levy's passion for the BVWHC mission.

After working on the BVWHC capital campaign, it was a natural progression to join the Board. I am so impressed with the dedication and commitment of all the staff and volunteers: They make the organization a truly special place.

I was drawn to the organization primarily because of its commitment to reproductive justice. My husband Andrew and I are parents of two amazing boys, and I feel strongly that my sons should grow up in a world where women control their own bodies.

I support BVWHC financially, as well as with my time, because I have tremendous appreciation and respect for the organization's commitment to serving all patients, regardless of a patient's ability to pay.

~Casey Gallagher, MD
 Donor and Vice-President of the Women's Health Board of Directors

Donors continued

Reich, William & Joy
Resnick, Linda & Levy,
Stuart
Richtel, Judith Ann
Rickman, Ted
Ridgway, Martha L.
Rifkin, Pam & John
Rimmel, Sarah
Robbins, Johann & Alice
Roberts, Joseph
Robertson, Barbara
Robertson, Philip & Marlys
Robinson, Kristin
Roninson, Paula
Rosall, Sharon & Nolan
Roscoe, Stephany
Rosenfeld, Beth & Fife, Lee
Rosenthal, Diane
Rouse, Sharon
Rubin, Bunny & Ted
Rush, Jon & Renouf, Alice
Ryan, Barbara
Safran, Marian
Sanders, Nancy L.
Sandstrom, Mark
Sanfacon, Garry
Saunders, Susan & Jim
Schabaker, Noah
Schacht, Barry & Patrick,
Jane
Schauble, Carolyn
Schlesinger, Mary
Schmidt, Cynthia E.
Schoettle, Anna
Schwab, Julia Bry
Scott, Rachel
Sebesta, Amy Lyn
Segal, Jo An S.
Seidner, Robin
Selbin, Joel & Marion
Seybolt, Edwina
Shaffer, Irene & Andrew
Shankman, Paul & Sally
Shannon, Mark
Shapiro, Nancy & Mark
Sheldon, Diana & Tom
Sheldon, M. Ross & Jane
Sheridan, Audrey
Sherman, Aleta

Sherwood, Carla
Sherwood, Kathy
Shoemaker, Linda & Brett,
Steve
Shoemaker, Lisa & Andrew
Shorter, Nanette L.
Silver, Abby
Simmons, Karen
Sinn-Penfold, Rob & Paula
Smalley, Nancy & Justin
Smith, Michael & Carlyn
Smoot, Carol
Smythe, Carol
Smythe, Stephanie
Standifer, Laura & Robert
Stapleton, Kelly
Steele, Susan
Stein, Charlie
Steinwand, Gregory
Stepanek, Caroline &
Joseph F.
Stephens, Andrew
Stern, Brian & Levine,
Marcie
Stevenson, Cheryl &
Cannon, James
Stoller, Peter & Sophia
Stone, Julie & Cummings,
Ron
Strand, Kathryn &
Haakinson, Eldon
Strand, Kerri
Strauch, Margaret E. &
Richard
Stroh, Randi & Anthony
Stuart, Jane
Sun, Shirley & Solomon,
Daniel
Swaggart, Martha
Sweet, Christine
Tantum, Seneca
Taxman, Ellen
Taylor, Annette
Temkin, Wendi
Terry, Christopher
Tucker, Jon
Udall, Mark & Fox, Maggie
Utley, Karen L.
Valent, Elizabeth & Richard

Valine, Claire
Van Der Mersch, Martha
Vandersall, Amy L.
Verveer, Elaine
Vidulich, Barbara
Vosper, Jane & Steve
Wajdowicz, Blaine
Walkenhorst, Kim
Walker, Pamela
Walker, Sophie
Wallace, Lillianne
Warner, Judith & James
Waters, Beth
Waters, Bob
Weatherley, Sara
Weaver, Alexandra
Weber, Mary &
Grammens, Gerald
Weber, Karen & Philip
Weber, Shanly
Webster, Dave & Lynell
Weeks, Sandra
Weinberg, Dr. Ruth K.
Wernet, Carol
Whelan, Wm Michael Jr.
Whicker, Erin
Whiting, Jo Lynne
Wildau, Rich & McClew,
Sharon
Williams, Sarah &
Brookens, Li
Wilson, Cindy & DB
Wilson, Don & Jerilyn
Wilson, Susan J
Winston, Kim
Wise, Duane
Woempner-Martin, Cynthia
Wolf, Howard
Wolf, Julie
Wolff, Edwin & Mary
Wolman, Natalie (Nicky)
and Fulker, David
Wolters, Nicolette
Woodard, Thomas &
Guthrie, Anne
Worminghaus, Karen
Wouk, Arthur & Vita
Wright, Mary
Wright, Mary Jo

Wright, Ruth
Wyatt, Kelly
Yager, Sophia
Young, Deanna & Matt
Youngmans, Sandy and
Shoptard, Richard
Zahniser, Julie
Zelazo, Janice
Zittrin, Elizabeth
Zukosky, Laura

BUSINESSES

Agave Mexico Bistro &
Tequila House
Alpine Surgical, LLC
Art & Soul Gallery
Arugula Bar E Ristorante
Avery Brewing Company
Ball Aerospace and
Technologies Corporation
Bead For Life
Bhakti Chair
Big Red F Restaurant
Group
Black Pepper Pho
Blue Crane Photography
Blue Heron Health
Blue Spruce Design &
Construction
Boulder Beer Company
Brasserie Ten Ten
Briar Rose Bed & Breakfast
BW Construction
Cafe Aion
Cat-Ears, LLC
Cedar & Hyde Mercantile
Collins, Rafik and Jacobson
Color Me Mine
Colorado Chautauqua
Association
Colorado Cider Company
Corden Pharma
Covidien
Craig D. Johnson &
Associates, P.C.
Downtown Gal Shoes
Eight Days A Week
El Loro Jewelry & Clog Co.

Female Health Company
Flagstaff House Restaurant
Flynn, Kitty
Foolish Craigs Cafe
Frasca Food and Wine
Golden Moon Distillery
Hapa Sushi Grill/Sake Bar
Hotel Boulderado
Jacque Michelle
Kelly Eyen Insurance
Agency Inc.
Kindara
Lindsay's Boulder Deli
Mark H. Carson &
Associates, P.C.
Martin Auctioneering
Mile High Spirits
Mountain Sun Pubs &
Breweries
Naropa University
North End At 4580
Orange Poppy Skin Care
Pasta Jays
Pizzeria Locale
Protein Bar
Proto's Pizzeria
Qualcomm Matching Gift
Program
Rags Consignments
Rio Grande
Roundhouse Spirits
Sargent Bickham Lagudis
Sex N Care
Shine Restaurant &
Gathering Place
Snooze, an A.M. Eatery
Spring 44
Stripe Right, Inc.
Tahona, Tequila Bistro
Tangerine
Ten20
The Kitchen
The Mediterranean
The Sink
Treeline Homes, INC.
Weaver's Dive and Travel
Center
West Flanders Brewing Co
Wild Cider

FOUNDATIONS/ TRUSTS

AEC Trust
Anchor Point Gift Fund
The April Fund
Brett Family Foundation
Britton Charitable Fund
Broomfield Community
Foundation
Caring For Colorado
Foundation
Chambers Family Fund
Denver Foundation
EMSA Fund
Foothills United Way
Freedom Fund
Hellogood Fund
The Hope Fund
Hospira Foundation
Howard and Mary Allen
Fund
Kenyon Family Fund
Kula Foundation
Longmont Community
Foundation
M.M. Gotten Fund
MannFreeman Family
Foundation
Marvin Naiman and
Margery Goldman Family
Foundation
McIntyre Family Fund
Namaste Foundation
Community Foundation
Serving Boulder County:
Community Trust Fund
Ertl Family Fund
Everest '96 Memorial
Gift Fund
Open Door Fund
Ormsbee Family Fund
Pounds Family
Foundation
S. A. Gardner Fund
Phoenix Public
Achievement Dreamers
Prentice Foundation, Inc.

Rose Community
Foundation
Shirley Sun and Daniel
Solomon Fund
Stevenson-Cannon Family
Fund
Thomas P. Waters
Foundation

COMMUNITY PARTNERS

Boulder Community
Hospital
Community United Church
Of Christ
Kaiser Permanente

GOVERNMENT

City of Boulder Housing &
Human Services
City of Boulder Youth
Opportunities Program
Boulder County
City and County of
Broomfield
City of Longmont
Colorado Family Planning
Initiative
Title X Federal Grant
(delegate agency)
Women's Wellness
Connection

*We have made every
effort to ensure the
accuracy of this list.
If we have omitted
or misidentified you
in any way, please
accept our apologies
and let us know.*

Leadership

Board of Directors

Our hard-working Board of Directors represent a diversity of age, race, ethnicity, gender, sexual orientation, city of residence and areas of expertise, including attorneys, physicians, financial experts and current/former patients.

Sarah Meshak, President
Casey Gallagher, VP
Patricia Meneley, Treasurer
Lisa Shoemaker, Secretary
Barbara Gould, Past President

Jon Berman
Nalini Brown
Jamie Fenton
Grace Filiss
Patrick Furman
Linda Hall-Taylor
Megan Harvell-Fruhworth
Jessica Ladd-Webert
PJ McGuire
Lisa Moffitt
Lauren Park
Sarah Rimmel
Robert Waters

Administrative Staff

Susan Levy, RN, JD
Executive Director

Ruth Weinberg, MD
Medical Director

Heidi Halpern, MNM
Finance Director

Lindsay Christopher
Development Director

Lisa Radelet, MA
Communications Director

Linda Johnson, WHNP, MSN
Clinical Director

Heather Goodchild, CNM
Clinical Director

Sherry Biskup, MA
Youth Services Director

Kelly Pollard, BA
Clinic Manager

Carmen Cool, MA, LPC
Counseling Supervisor

We need you!

This report highlights the many improvements and successes Women's Health has achieved over the past year of transition into the new healthcare marketplace, particularly the impact of expanded access to health insurance for many of our patients.

But our work is not done! We know that there will always be patients who are uninsured—those who fall through the cracks of insurance coverage, are ineligible for coverage, or unable to use their insurance because of unaffordably high deductibles or confidentiality concerns. For those patients, we are still here to make sure they can access high quality health care using our income-based sliding fee scale.

Your financial support is still needed to ensure that Women's Health can continue to offer services on a sliding scale to those in need. Go to our website, www.boulderwomenshealth.org, to donate or to find out how you can become a monthly sustainer.



WOMEN'S HEALTH

BOULDER VALLEY WOMEN'S HEALTH CENTER

BOULDER VALLEY WOMEN'S HEALTH CENTER

2855 Valmont Road, Boulder, CO 80301

82 21st Avenue, Longmont, CO 80501

Clinic line: 303-442-5160 • Admin line: 303-440-9320

Email: info@bvwhc.org

www.boulderwomenshealth.org • www.teenclinic.org