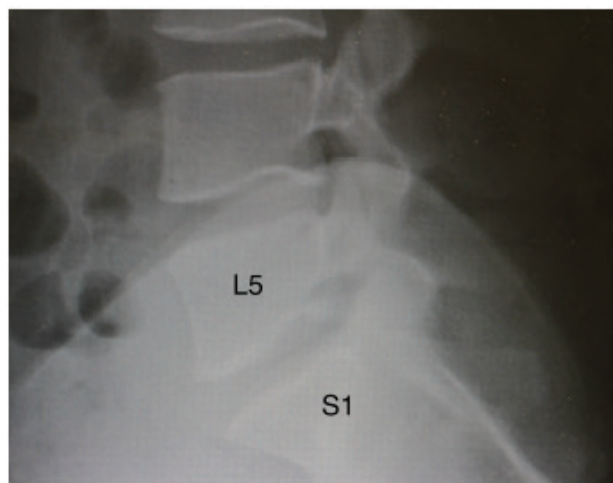


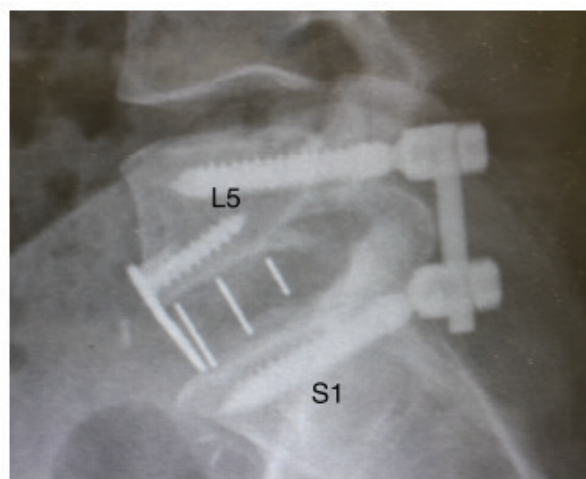
1 Level: L5-S1

Fang Plate®, Cottonmouth® (ALIF) Cage & Diamondback® Pedicle Screw System

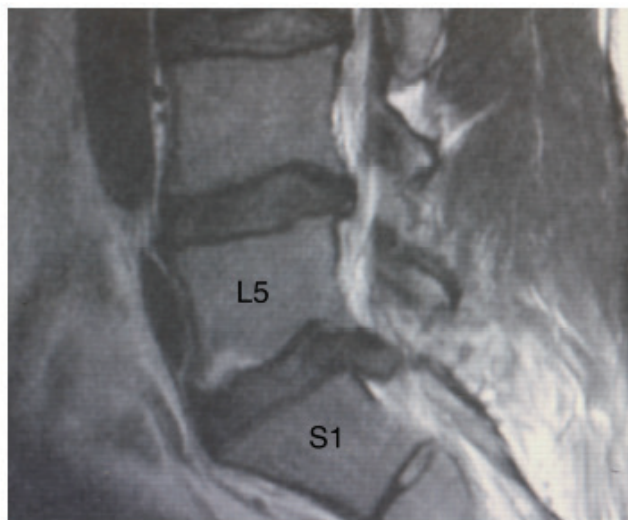
40 y/o WF with DDD and Recurrent Disk Herniation



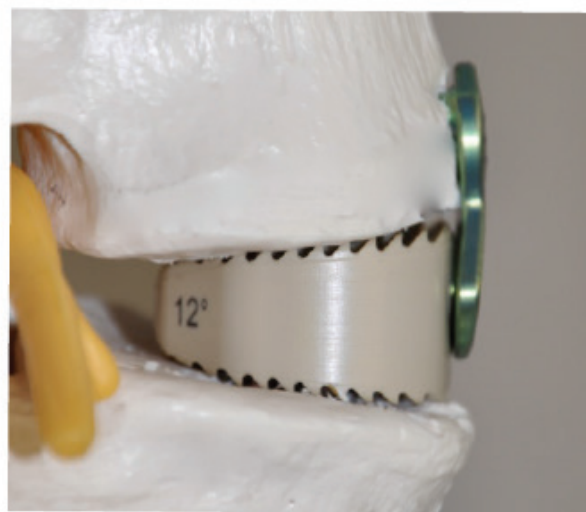
Pre-Op



3-month Post-Op X-ray



Pre-Op MRI



Model side view showing Fang Plate® and Cottonmouth® (ALIF)

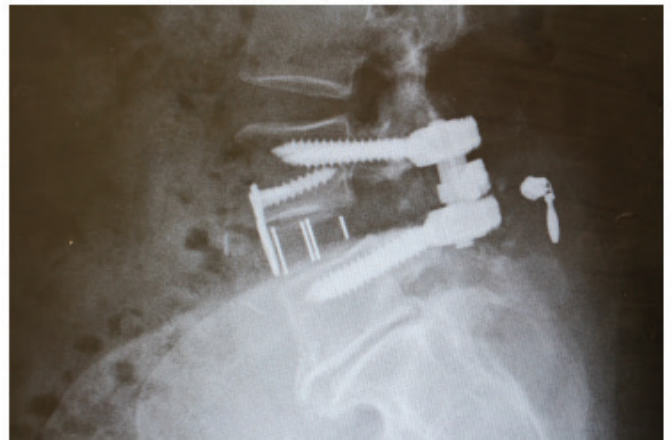
1 Level: L4-L5

Fang Plate®, Cottonmouth® (ALIF) Cage & Diamondback® Pedicle Screw System and Boa Constrictor® Cross Link

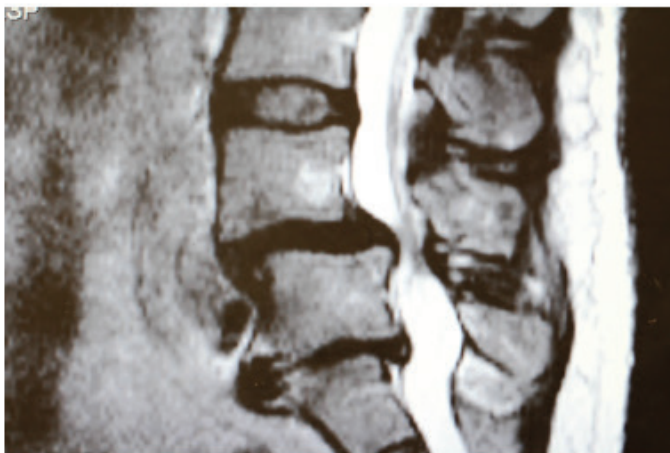
54 y/o WF with Degenerative Spondylolisthesis



Pre-Op



Post-Op X-ray



Pre-Op MRI

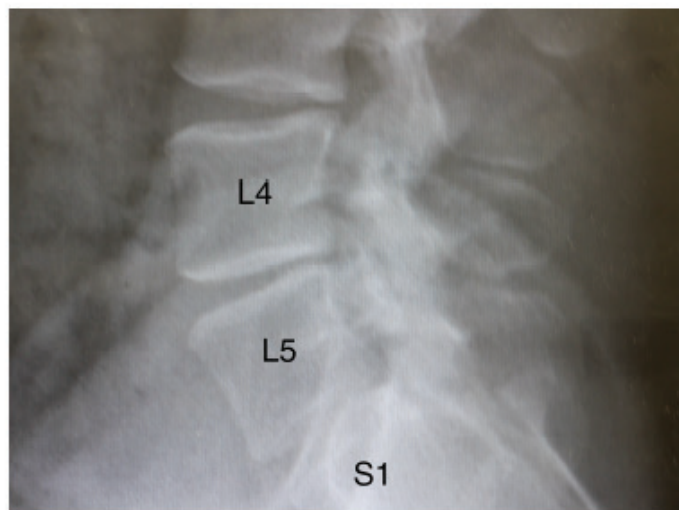


Post-Op X-ray AP

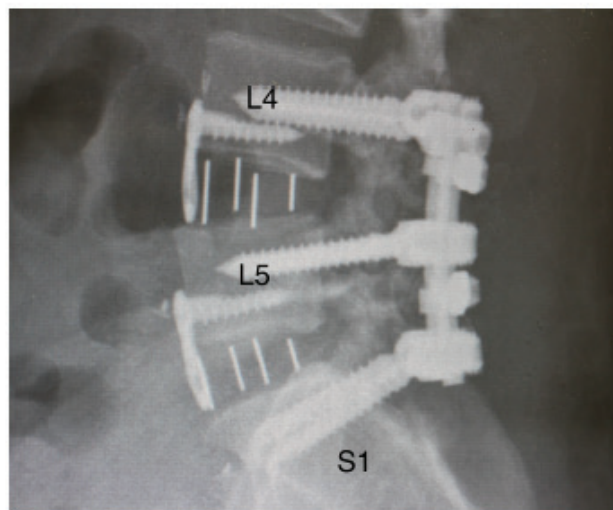
2 Level: L4-L5, L5-S1

Fang Plate®, Cottonmouth® (ALIF) Cage & Diamondback® Pedicle Screw System and Boa Constrictor® Cross Link

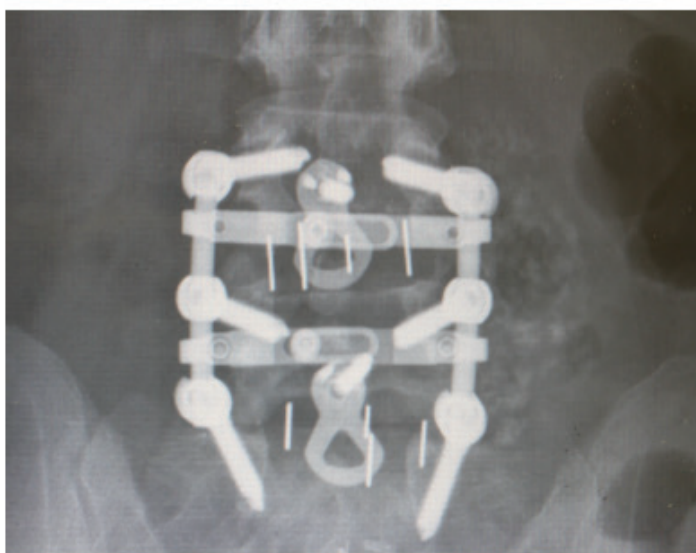
45 y/o WF with Diskogenic Lumbar Pain & Radiculopathy



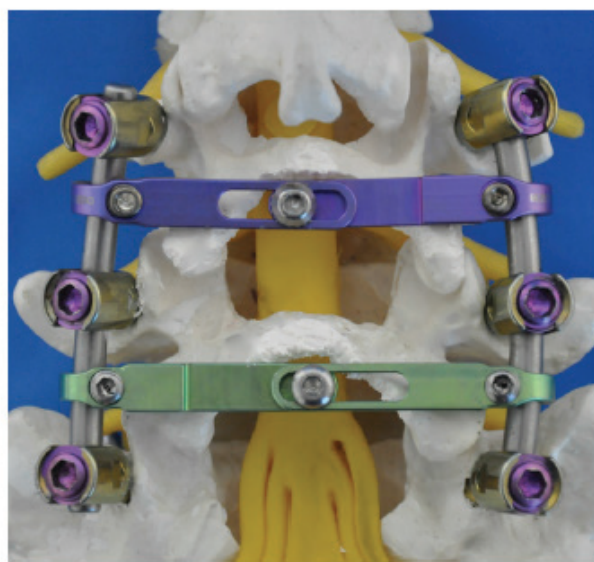
Pre-Op



6-month Post-Op X-ray



6-month Post-Op X-ray AP

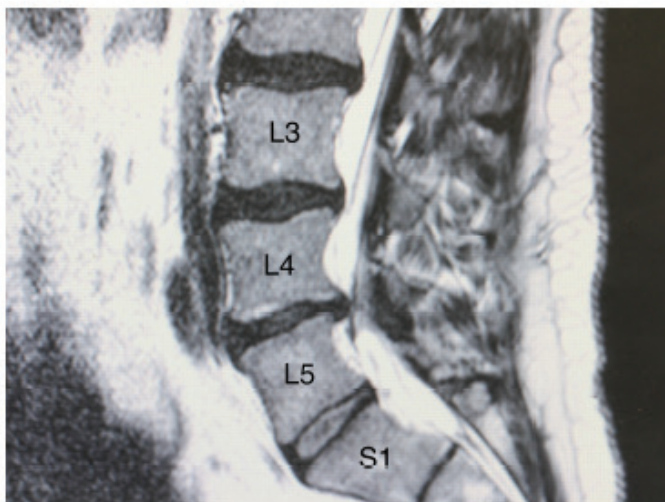


AP model view

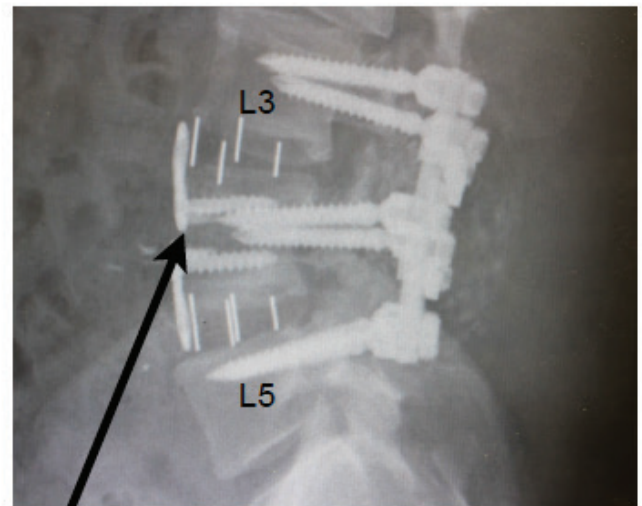
2 Level: L3-L4, L4-L5

Fang Plate®, Cottonmouth® (ALIF) Cage & Diamondback® Pedicle Screw System and Boa Constrictor® Cross Link

50 y/o WM with DDD and Stenosis



Pre-Op MRI



*Fang Plate® placed per vascular anatomy



6-month Post-Op X-ray
AP



Model view of
Fang Plate®